

# Within WARWICK

Winter 2018



*The Heart of Bucks County Pennsylvania*



## INSIDE

Contact Directory.....	2
Board of Supervisors.....	3
2019 Comprehensive Plan Update Seeking Volunteers.....	4
Reminder for Phase I On-Lot Sewage Registration.....	4
Cheap Insurance, But Very Effective .....	5
Residential Sprinkler Systems Inspections .....	6
Understanding Your Public Water Supply Pressure.....	7-8
Why are There Stormwater Basins .....	8
Tax Office.....	9
Working Together.....	9
A Healthy Community Starts with a Healthy Staff .....	10
Discount Tickets.....	10
Calling All Book Lovers .....	10
Warwick Township Parks and Recreation.....	11-15
Pack the Police Car .....	15
Ho Ho Holiday Party.....	16
Moland House .....	16
Public Works Department .....	17
Tips for Snowy Weather .....	17

Welcome • to • Warwick • Township  
Visit • our • website • at • [www.warwick-bucks.org](http://www.warwick-bucks.org)



*Providing  
Affordable,  
High Quality  
Dentistry  
to the Entire  
Community*



**Digital X-Rays • Nitrous Oxide  
Drill-less Drills**

**ALL COSMETIC DENTISTRY INCLUDING:**

Bleaching, Bonding, Veneers, Implants,  
All Ceramic Crowns and Bridges,  
Invisalign and Tooth Contouring.

**Dr. Susan Plotnick, D.M.D.**

1672 Fairway Drive, Jamison, PA 18929

**215-343-0900**

**LEARNING FOR FUN.  
LEARNING FOR LIFE.®**



THE  
**GODDARD SCHOOL®**  
FOR EARLY CHILDHOOD DEVELOPMENT

**CALL TODAY FOR A TOUR!**

**JAMISON • 215-491-2100**

1600 MEYER WAY

GoddardSchool.com



**INFANT THROUGH KINDERGARTEN • SUMMER CAMP**

The Goddard Schools are operated by independent franchisees under a license agreement with Goddard Systems, Inc. Programs and ages may vary. Goddard Systems, Inc. program is AdvancED accredited.  
© Goddard Systems, Inc. 2015



**perfecta®**  
Retractable Fabric Awnings  
Manufactured Locally

*The Quality, Reliability  
& Experience You Expect*

**215-659-5239**


www.jmtawnings.com

PA018147



**O'NEIL NISSAN**

Family Owned & Operated Since 1986

849 W. Street Rd.   
Warminster, PA 18974



2018 Nissan Sentra NISMO

oneilnissan.com • 215-674-9300

Check out our huge selection of new,  
certified, and pre-owned vehicles online!



# WARWICK TOWNSHIP DIRECTORY

1733 Township Greene | Jamison, PA 18929 | 215-343-6100 | 215-343-4407 fax

[www.warwick-bucks.org](http://www.warwick-bucks.org)

Comcast Cable Channel 22 | Verizon Cable Channel 46

**Monday –Thursday, 8am – 4pm, Friday 7am – 3pm**



## IMPORTANT PHONE NUMBERS

Police Emergencies . . . . .	9-1-1	Hartsville Fire Co. (non-emergency) . . . . .	215-672-9242
Fire Emergencies . . . . .	9-1-1	Water & Sewer Authority . . . . .	215-343-3584
Police Dispatch (non-emergency) . . . . .	215-343-0100		or 215-491-0610
Warwick Fire Co. (non-emergency) . . . . .	215-343-9971	Tax Collector – Denise Betts . . . . .	215-491-0611

## BOARDS AND COMMISSIONS

### Board of Supervisors

Judith A. Algeo, Esq., Chair

John W. Cox, Vice Chair

Edward P. Thompson

3rd Monday . . . . . 7pm

### Parks and Recreation Board

Quarterly on 3rd Wednesday . . . . . 7 pm

### Financial Advisory Committee

Quarterly and as needed . . . . . 12 pm

### Zoning Hearing Board

1st Tuesday, as needed . . . . . 7 pm

### Planning Commission

1st Wednesday, as needed . . . . . 7 pm

### Tree Committee

Quarterly on 3rd Wednesday, as needed . . . . . 7 pm

### Water & Sewer Authority

4th Monday (3rd Monday in May) . . . . . 7 pm

## STAFF DIRECTORY

Kyle Seckinger, *Township Manager*

[kseckinger@warwick-township.org](mailto:kseckinger@warwick-township.org)

Becki Wilhelm, *Director of Finance and Benefits*

[bwilhelm@warwick-township.org](mailto:bwilhelm@warwick-township.org)

Brandy McKeever, *Director of Planning and Zoning*

[bmckeever@warwick-township.org](mailto:bmckeever@warwick-township.org)

Ashley Casey, *Zoning Officer*

[acasey@warwick-township.org](mailto:acasey@warwick-township.org)

Catherine Topley, *Executive Secretary/Office Manager*

[ctopley@warwick-township.org](mailto:ctopley@warwick-township.org)

Mark Goldberg, *Chief of Police*

[warwickpolice@comcast.net](mailto:warwickpolice@comcast.net)

Ed Pfeiffer, *Fire Marshal*

[epfeiffer@warwick-township.org](mailto:epfeiffer@warwick-township.org)

Mark Rambo, *Director of Public Works*

[mrambo@warwick-township.org](mailto:mrambo@warwick-township.org)

Dan Sharapan, *Director of Parks, Recreation & Open Space*

[dsharapan@warwick-township.org](mailto:dsharapan@warwick-township.org)

Sarah Prebis, *Parks and Recreation Program Coordinator*

[sprebis@warwick-township.org](mailto:sprebis@warwick-township.org)

2600 York Road, Jamison, PA 18929 - 215-343-0350 - [www.TheBucksclub.com](http://www.TheBucksclub.com)



OPEN TO THE PUBLIC

18 HOLE PUBLIC GOLF COURSE - WEDDINGS - CORPORATE EVENTS & MEETINGS

GOLF OUTINGS - LESSONS/DRIVING RANGE - PRO SHOP - SWIM CLUB

MEMBERSHIP OPTIONS





## From the Board of Supervisors . . .

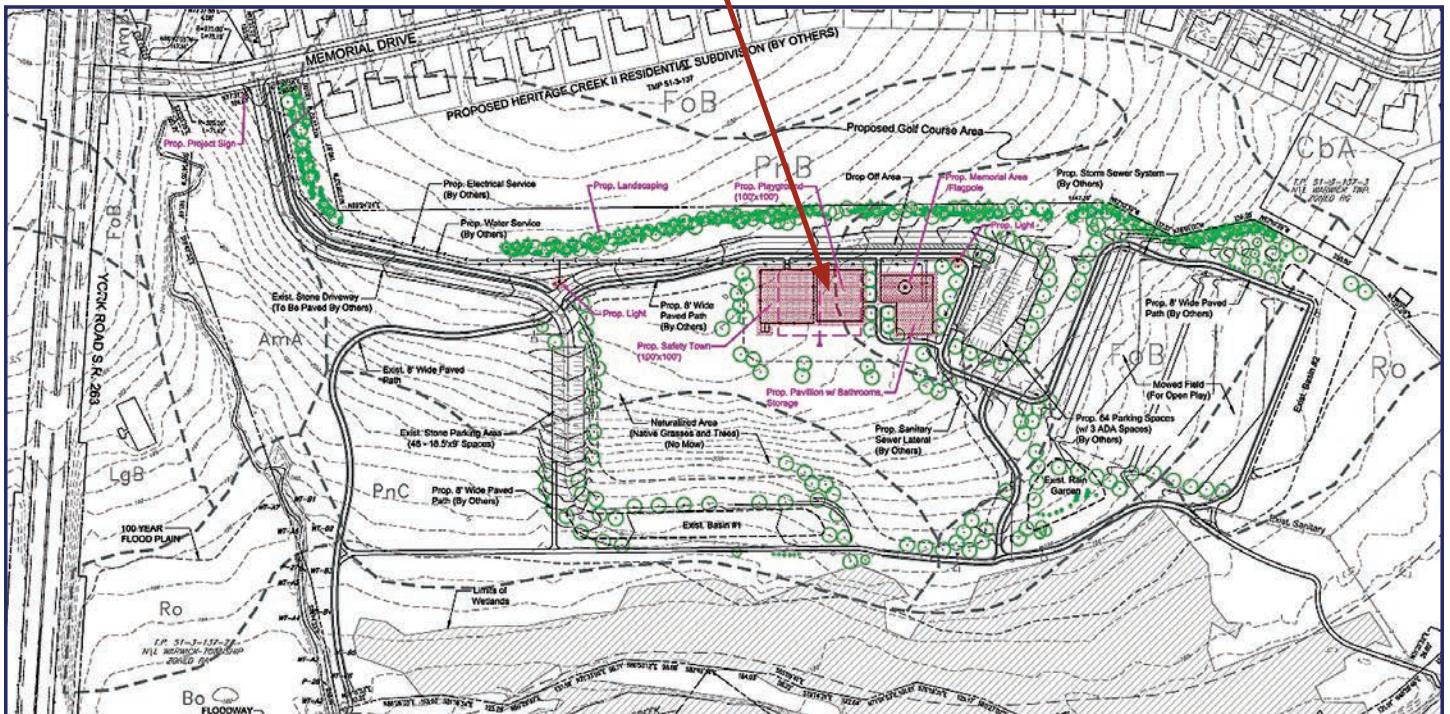
We are excited to announce that the final phase of construction on Memorial Park has begun. While we will hold an official grand opening next spring, Memorial Park will be completed by year's end. The park is located at 1200 Memorial Drive (Off York Road).

The park amenities include 1.5 miles of multi-use trails, a spacious pavilion with picnic areas, playground, passive recreation fields and breathtaking views. These amenities were designed to appeal to Warwick residents of all ages. The multi-use trails meander along the Little Neshaminy Creek which feature abundant wildlife and quintessential Bucks County scenery. The roofed pavilion features a memorial patio, picnic tables and seasonal restroom facilities. The 10,000 square foot playground includes a section for



2-5 year old and 5-12 year old children, as well as, a large row of swings, slides of different aptitudes, interesting and unique climbing apparatus, and many supplementary elements to entice any child's imagination. The park is tucked in a uniquely wooded area of Warwick Township, which only adds to its charming appeal.

## Proposed Playground placement





## 2019 Comprehensive Plan Update Seeking Committee Participation

Warwick Township will be conducting a Comprehensive Plan update in 2019. A Comprehensive Plan is a guide for the future development of a community. It examines the physical, social, and economic characteristics that come together to define what exists today and form a foundation for the future. In order to complete the update a Comprehensive Plan Committee will be formed. Warwick Township is currently seeking interested and qualified individuals within the Township to participate. Should you desire to be a committee member please forward your resume and a letter of interest to the following: Attn. Brandy McKeever, 1733 Township Greene, Jamison, PA 18929. You can get more information about this opportunity by calling 215-343-6100 or e-mailing [bmckeever@warwick-township.org](mailto:bmckeever@warwick-township.org).



### REMINDER FOR PHASE 1 ON-LOT SEWAGE REGISTRATION *Nancy Ehrmann-Cheatle, Code Enforcement Officer*

In January 2018, the Township sent letters to all households in phase 1 of the Warwick Township on-lot sewage management program. These households are required to have their septic systems pumped by December 31, 2018. They must file a visual inspection form that is to be filled out by their waste hauler. In addition, we need a copy of the bill from their hauler.

Warwick Township is requesting that anyone who is part of phase 1, have their system pumped and return their forms to us as soon as possible to avoid having to pay any fines in the future. If you have lost or misplaced your forms, you can obtain a copy by going to our website, [warwick-bucks.org](http://warwick-bucks.org) (permits and forms) or you can pick them up at the Township administration building.

In 2011, Warwick Township adopted the on-lot sewage maintenance ordinance to ensure basic maintenance of on-lot septic systems in the Township. Septic tanks must be pumped at intervals not to exceed three years. You only need to register for the program one time but you will be notified every three years in reference to pumping your tank. Pumping your tank regularly will greatly reduce the chance of accumulated solids escaping the tank and clogging other components, especially the drainfield, which is the most critical component of most septic systems. In addition, pumping the tank regularly will prolong the life of any on-lot system.



## Bucks County's Finest Luxury Townhome Rentals

DOYLESTOWN • CHALFONT • PERKASIE • SELLERSVILLE

 **HERITAGE**  
Property Management

**866.721.5687**

**HeritagePropertyRentals.com**



**PETS STAY  
FREE!**

# Cheap Insurance, *But Very Effective*

## Ed Pfeiffer, Fire Marshal

Six 10-year battery wireless interconnected smoke detectors (in 3 bedrooms, outside the bedrooms, basement and the garage) cost \$240. (6 x \$40. each, tax included). Detectors with batteries are designed to last for 10 years. By installing smoke detectors in all of these rooms, your home meets the requirements of the International Residential Building Code. When any detector senses smoke, all of the detectors make noise. Detectors with the "interconnection" feature insures you will hear the alarm no matter where you are in your home. They also insure that since smoke doesn't penetrate a door, wall or ceiling, smoke is detected quickly.

If your home is valued at \$300,000 and the annual fire insurance premium is \$1,000. In 10 years, the total of the fire insurance premium is \$10,000 against the possibility of experiencing a fire, (post-fire insurance). Everyone purchases this insurance in order to provide the money to rebuild after a fire. This doesn't include the possibility of burns to occupants or loss of life.

Interconnected smoke detectors are a form of Fire & Life insurance as they provide the opportunity to prevent the fire from happening. Not only sounding the earliest alarm if there is smoke in the house, but time for the occupants to take action to prevent the smoke from developing into a fire (unplug an appliance, use a fire extinguisher, call the fire dept., etc.). Knowing there



is smoke in your house at the earliest possible moment is fundamental to avoiding the risks of a fire. This is especially true when you are asleep. Without the "interconnection" feature, you can't possibly hear the garage or basement detector from your bedroom.

You are most vulnerable when you are asleep and can't hear traditional, non-interconnected detectors. If you hear the non-interconnected detector in your bedroom or outside your bedroom, there is smoke in or outside your bedroom. National statistic - 84% of the people who die in a fire, die in their own home. Most of these fatalities occur at night.

Spread over the 10-year life of the interconnected detectors, the annual cost of this "pre-fire" insurance is \$24 per year (\$240 divided by 10 years) or 2.4% of the "post fire" insurance.

Run the numbers for your home. Larger homes will require additional detectors. Smoke must have a direct path to reach a detector. The investment in detectors is the best "insurance" money can buy for you, your family and your home.

Wireless Interconnected Smoke Detectors provide the equivalent of a "hardwired" system without the wires. They are an easy retrofit for any home and are available from the major smoke detector manufacturers. Always look for the UL Label.

### Winter Dental Specials!

- Implants
- General
- Veneers
- Invisalign®
- Free second opinion

**Creating Beautiful Smiles Every Day!**



**Amit Motwani, DMD**  
215-491-4711  
1330 Easton Rd, Warrington  
Warrington Shopping Center

[www.WarringtonDental.com](http://www.WarringtonDental.com)

Exams, Cleaning & X-Rays \$99 <b>\$79</b> <small>Must bring in ad to receive this offer</small>	Invisalign® \$4,500 <b>\$4,000</b> <small>Must bring in ad to receive this offer</small>	Implants \$3,500 <b>\$3,000</b> <small>Must bring in ad to receive this offer</small>	In-Office Whitening \$299 <b>\$189</b> <small>Must bring in ad to receive this offer</small>
---	--	---	--

### BUCKS COUNTY'S LEADING DISCOUNTER

## Jamison Carpets & Flooring

**215-343-3382**  
[jamisoncarpetsandflooring.com](http://jamisoncarpetsandflooring.com)  
Hours: Mon, Tues, Thurs, Fri 9-5 • Wed 9-7  
Sat 10-4 • Sun 12-4

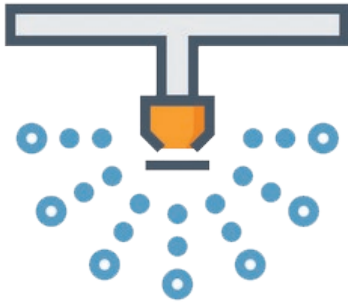
### HERB ELSNER'S

AUTO REPAIR & TOWING  
**215-348-9888**  
30 Rogers Rd  
Furlong, PA 18925  
**215-397-7935**  
24 Hr TOWING SERVICE



# Residential Sprinkler System Inspections

*Ed Pfeiffer, Fire Marshal*



## General Sprinkler Information

1. Fire sprinklers are required in all new homes built in Warwick Township.
2. Fire sprinklers are required in all new townhomes built in Pennsylvania.
3. There are nearly 2600 homes equipped with residential sprinklers in Warwick Township. This currently accounts for slightly more than 50% of all homes in the township.
4. All repairs and maintenance should be done by a registered residential sprinkler contractor.
5. A complete study of residential sprinkler systems in Bucks County was conducted in 2011. <https://homefiresprinkler.org/wp-content/uploads/2016/05/BucksCountyReport.pdf>

## General Inspection Requirements

1. The orange sprinkler pipes are rated by the pipe manufacture for 175 PSI.
2. The sprinkler heads are rated at 155 degrees F. Only the head seeing 155 degrees can activate.
3. The sprinkler heads or covers on concealed sprinkler heads cannot be painted. Paint on a sprinkler head requires the sprinkler head to be replaced.
4. Nothing should block the sprinkler heads.
5. Nothing should be hung from a sprinkler head.
6. All control valves, if they exist, must be in the "ON" position.

## Plain Water Sprinkler Systems

Systems containing water have a non-testable double check valve. This valve keeps the stagnant sprinkler water from entering the drinking water. This check valve only allows water to enter and, therefore, locks-in any higher pressure that enters the sprinkler system. If your system receives excessive pressure, the pressure can be reduced by slowly opening the drain hose valve and bleeding off some water until the pressure lowers.

## Anti-Freeze Sprinkler Systems

**Systems containing Anti-freeze should have the following tests done every three (3) years at a minimum.**

- a. The anti-freeze solution must be checked for specific gravity to determine the temperature protection. It must be -5 degrees F.
- b. The "backflow" prevention device requires a certification inspection by an approved contractor.
- c. Both tests must be done whenever a home is sold.

**Note 1:** All homes in Heritage Creek, Augusta Dr. and some homes on Rockcress Dr. have anti-freeze systems.

**Note 2:** Failure to perform these tests may allow anti-freeze to enter your drinking water and may allow your sprinkler pipes to freeze in your attic. A frozen pipe can burst and cause catastrophic damage to your home at the coldest time of the year.

**Note 3:** Constantly lowering the water pressure in an anti-freeze system will dilute the anti-freeze, lessening its ability to prevent freezing.

## Private Well Pump & Tank Systems

1. These systems do not receive their water from the Warwick Water system.
2. The required pressure to operate your system was calculated at the time your system was designed.
3. The holding tanks must be full.
4. Your system is designed to operate two sprinkler heads for 10 minutes. This allows sufficient time to escape a fire.
5. The system should be operated annually by cycling water from your hose-bib test point back into the tanks. The pump will come on when the pressure drops and shut off when it reaches the peak pressure.





# Understanding Your Public Water Supply Pressure

Warwick Township Water and Sewer Authority (WTWSA) recently received a number of inquiries related to pressure in our distribution system. The following information is being provided to explain the operation of the public water system and the reasons for pressure differentials throughout the distribution system.

The distribution system is a network of pipelines that distribute water to the consumers. They are designed to adequately satisfy the water requirement for a combination of domestic, commercial, industrial and firefighting purposes. WTWSA purchases 100% of its potable water supply from the North Wales Water Authority and Aqua Pennsylvania. These two suppliers provide a redundant supply of water and typically meet the daily water demand and pressure requirements for the Authority's customers. WTWSA also has a network of water storage tanks and booster stations to accommodate periods of high demand and firefighting needs for the community.

The pressure in the distribution mains vary greatly in Warwick Township due to significant differences in elevation. Pressures vary from 40 psi at the highest point of the township and can be as great as 140 psi at several lower elevations in the township. Pressure reducing valves (PRVs) are used when there are significant grade changes in a system. The Authority requires a pressure regulating valve on all domestic water service to regulate this pressure entering your home or business to protect the internal piping and appliances as well as regulating the flow from these fixtures. This device regulates how much water pressure is allowed to enter a home. The regulator sits along the main water line, usually in an access panel, crawl space or basement. Adjust the valve by loosening the locking nut around the bottom of the valve and turning the screw on top of the PRV to the desired psi rating. Tighten the locking nut again when finished. The American Water Works Association recommends a normal static pressure of 60 to 75 psi throughout a system. Note that there is not a maximum water pressure requirement for public water supply systems.

The illustration on the next page demonstrates the effect of elevation on water pressure.

**Here are some frequently asked questions about PRV's**

## **1. What is a Water Pressure Regulator?**

Also called water pressure reducing valves, they are compact, inexpensive regulators that perform two functions:

- a. They automatically reduce the high incoming water pressure from the Authority's mains to provide a lower, more functional pressure for distribution in the home.

- b. They "regulate" by maintaining a set pressure in the home usually 50 lbs. thereby insuring that the home piping and appliances operate under a safe, more moderate, but satisfactory pressure. Most PRV's can be adjusted from 25 psi to 75 psi.

## **2. What is Water Pressure?**

When a fixture in a home is opened and water flows from it, it is because the water is "pushed." This "push" is pressure. The speed at which water flows from the opened outlet depends on the amount of "push" or pressure which exists at that time in the system. In short, the higher the pressure, the stronger the "push" behind the water.

## **3. What is Wrong with High Water Pressure?**

High water pressure, which is generally considered anything above 60 lbs., has some advantage, such as in firefighting systems. However, in the home plumbing system, it can be damaging because water, with a strong "push" behind it, can erode or wear away many materials and cause leaking water heaters, banging water pipes, dripping faucets, dishwasher and clothes washer noise and breakdown, and leaking water pipes. Therefore, water flowing at a rate in excess of that necessary to satisfy normal fixture or appliance demands becomes damaging, wasteful and reduces the life expectancy of equipment in the system. But, probably most important to the average homeowner is that it can add to the cost of water, energy and waste resulting in higher water bills.

## **4. Does High Water Pressure Cause "Water Hammer"?**

Yes, and water hammer is very simply the noise generated by the shocks of high-speed water flowing in a pipe when a fixture is suddenly closed. The sudden stoppage causes a "bounce back" of the water and is called water hammer, causing banging pipes, noisy systems and damage to appliances. This principle is based on the fact that moving objects, and this includes water, tend to move in a straight line. They resist changes in direction. Therefore, in a home where the piping has many changes in direction, water hammer shock can be limited by reducing the water pressure. The same is true in the distribution system where certain operating or fire fighting activities may cause significant pressure increases in the system.

## **5. What is the difference in water flow from a fixture when the pressure is at 100 lbs. vs. a pressure of 50 lbs.?**

Reducing the pressure from 100 lbs. to 50 lbs. will result in a saving of approximately 1/3 because 1/3 less water flows at this lower pressure. Remember, there is more "push" behind the water at 100 lbs. than at 50 lbs. and most of this water is wasted.



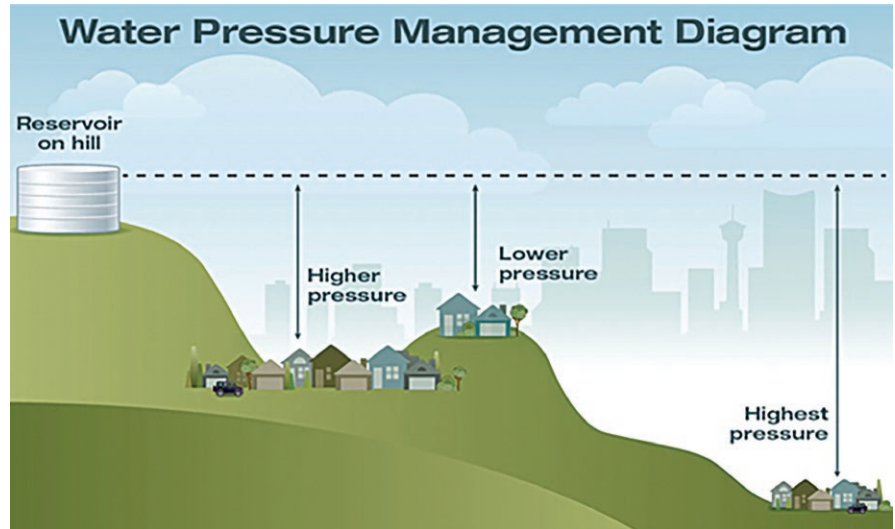
# Understanding Your Public Water Supply Pressure

## 6. Does my PRV require maintenance?

Yes, like any mechanical device your PRV will not last forever. If the pressure in your home seems to be elevated your PRV may need to be rebuilt or replaced.

Lastly, the Authority does not oversee, review, inspect or obtain revenue from those houses that have sprinkler systems for fire protection. If you have questions related to the operation of these systems please contact your sprinkler service company for information.

For any questions related to WTWSA water quality or supply please go to our website at [wtwsa.org](http://wtwsa.org) or contact our office at 215-343-3584.



## Why are there Stormwater Basins?

### First, what is a Stormwater Basin?

Stormwater basins are areas that are constructed with earthen berms to hold stormwater after a rain and release the water more slowly into the stream. When stormwater basins were built with older developments, basins were primarily to control flooding and reduce erosion of the streambanks by holding back the runoff from a storm. More recently, the regulations require that stormwater basins also be designed to address water quality.

### What is a Naturalized Stormwater Basin?

Typically, a Naturalized Stormwater Basin allows for the vegetation in the bottom of the basin to grow into a meadow. These basins can be mowed once or twice a year to keep the growth from getting too high.

### Why naturalize a basin?

Many municipalities have been required by the Pennsylvania Department of Environmental Protection to find ways to improve the water quality of the streams and lakes within and downstream of the municipality. One method to improve water quality is to modify an older stormwater basin by removing any concrete channels in the basin and allowing a meadow to grow in the bottom of the basin. This slows the water down and allows some of the water to infiltrate into the ground to recharge the aquifer and be used by the plants rather than flowing out into the stream. Also, by slowing the water, sediments and pollutants will settle out in the basin and not be washed into the stream.



# GREETINGS FROM THE TAX OFFICE

## Denise Betts, Warwick Tax Collector

**R**eal Estate tax bills for 2018 were mailed March 1st and June 30th. If you did not receive a tax bill or would like to check on payment status, please contact the office by phone or email. Liens for unpaid tax bills for 2018 will be turned over to Bucks County Tax Claim in December. New homeowners or deed changes please remember to apply for the Homestead reduction through Bucks County Board of Assessments by March 1, 2019. Please update the tax office of any address changes. To contact Denise at the Tax office, call 215-491-0611 or e-mail [Warwicktaxbetts@aol.com](mailto:Warwicktaxbetts@aol.com). This office collects only real estate taxes. The earned income and LST tax collector is Keystone Collections. You can contact them at 1-888-328-0565 or their website [Keystonecollects.com](http://Keystonecollects.com).

## Working Together

Warwick Township was voted one of the safest cities in Pennsylvania in 2017 by the National Council for Home Safety & Security. It takes a lot of people working together to keep Warwick a safe and fun place to live. From our First Responders, to our Board of Supervisors and administrators, to our Public Works and Parks & Recreation departments, we all work hand-in-hand with the residents and business owners of our community to keep Warwick Township running smoothly. Can you find the municipal terms listed below in the word search?

S S B Y O L N G P G O R C P A R F Z L I E S U N W S A V P E  
R R M F Y P O E Z F E H H O M S U D O A W C I I D C I C G B  
P R O F D P I N B S I Y M L B E O P R N H O J D M H C L X G  
R E D S V X T Z I E Q G Y I U C B A O W I S W B F O D U Q T  
X G M T I N A D F E E N Z C L Y X N T O N N R J V O A H V N  
V A N Q S V E M Z V M P R E A X F S C O C J G A M L Z S Y L  
B N V Y Q N R H C L N R X O N G M U E W U C I O M S F C D R  
C A E K T Z C E G N Z J N F C T D Z P I N I W A F E J E I L  
C M F S Q L E K P L Z A U F E T N H S H E Z F O A F R X G K  
P T C S O R R G W U M G D I B U S I N E S S E S L J I I E U  
R O T C E R I D L E S Z V C H R F W I N G A N P J P A C F P  
E J E U O M I F R Z H F S E W B K P G P Q O Z N B X W T E D  
J Q Y Z J I B I F E S X O R Z E D S N R A E Y Z J M A O D R  
H Y N D G R F Y J M J W Q D U K V U I N T L D Z T X F X N P  
J Y E M W I W I W U S C B T R G S J D M N W I N C U E L J S  
O K H I K I M H W C C T W E M A G O L T A F E O E P S V V Q  
V X M I C N D P O Z D D R T E M O S I J M M L F I N A N C E  
L E I B R A A E K G T A F E X R Z B U E T L M R Y Y X S E L  
Z W T R T O U B G A Y E R D E Q J Q B R E X Q P M Z Q F F I  
H C O D E E N F O R C E M E N T J K A C P Y E Y Q Y L R N Z  
V G Z Z X E B N E U E K G V Q Q S P T R D O C O M H E Z R V  
J R D D S K G G E S I C S F T H E O Y H I G S E K P W M O J  
W Y P A Y B U E R M P C R N S D R T A P M Y O T A A L P D Z  
P F G X I W V U B T H F T E R X C A O J F I X C O Q N J N A  
Y S U L M A H A M W J B A E P N X T R M L Z S X J F N V K Y  
X U H G J N E R W T I Y T I P P G Q D N Z D G A X Y F E C L  
G X I P L N E J S I G A B D W K M H H W N K A T P C Q I G E  
S K R A P E C S O Z W S Z O S W T X E A F X H R W U F D C B  
S K R O W C I L B U P O C O B H V M L B H M D O P F I C P E  
K B X L J Z B S T J S Q Q G W C S U A K U Z I V K M Z W W T

AMBULANCE  
BANK  
BOARD OF SUPERVISORS  
BUILDING INSPECTOR  
BUSINESSES  
CHIEF  
CODE ENFORCEMENT  
DIRECTOR  
FINANCE  
FIREMAN  
FIRE MARSHAL  
LANDSCAPER  
MANAGER  
PARKS  
POLICE OFFICER  
POST OFFICE  
PUBLIC WORKS  
RECREATION  
RESIDENTS  
SCHOOLS  
SNOW PLOW  
STREETS  
TAX COLLECTOR  
WATER DEPARTMENT  
ZONING OFFICER

### F. WACKENHUT COMPANY

OVER 100 YEARS IN BUSINESS

Plumbing • Heating and Air Conditioning  
Residential • Commercial • Industrial

Ron Evans

2132 York Road • Jamison, PA 18929  
PH: 215-343-2222 • Fax: 215-343-2225  
[ron.wackenhut@wackenhutcompany.net](mailto:ron.wackenhut@wackenhutcompany.net)  
[www.wackenhutco.com](http://www.wackenhutco.com)



Reg. #PA 011977

**10%** to veterans or Warwick residents  
Discount – Max. \$100.00



OVER 25 YEARS EXPERIENCE

Phone: 215-317-2841  
Hatboro, PA 19040

Bob Darreff

PA Lic 833609

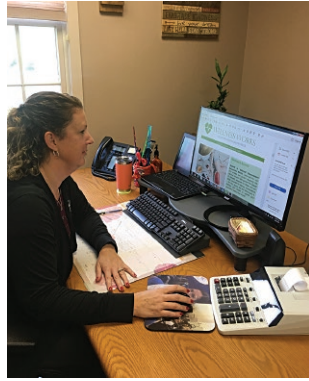


## A Healthy Community Starts with A Healthy Township Staff

We, the staff of Warwick Township, want to provide our residents with the best service possible. In order to give you the best we have to give, Warwick Township has been working closely with the Delaware Valley Health Trust, to participate in a Healthy Workplace Initiative.

Studies have shown that healthier employees are happier employees. The Township

Board of Supervisors and Township Manager have recognized the benefits of a healthier work place. They encourage all Warwick Township staff to participate in this initiative. By keeping your township staff healthy, there will be less sick days, leading to a staff that is ready, able and excited to assist you in any way you may need. Less employee turn around, leads to an environment where you will always have a familiar, happy face to greet you at Township offices and events.



## DISCOUNTED TICKETS

The Parks and Recreation Department offers discounted tickets throughout the year. You can purchase discount movie tickets, year round, for \$9.50 per ticket. These tickets are available for use at all Regal Cinemas, United Artists Theatres and EDWARDS Theatres. Tickets are valid for all show times with no restrictions. Movie tickets are perfect for birthday gifts, holiday gifts, thank you gifts, employee incentives, etc.

We also offer discount ski tickets. We typically receive our tickets by late December and they are available until the end



of March. You can purchase tickets for sites such as Bear Creek, Big Boulder/Jack Frost, Blue Mountain, Camelback, Elk Mountain and Sno Mountain.

All tickets are sold at the Warwick Township building, 1733 Township Greene, Jamison, PA 18929 during normal business hours, Monday – Thursday, 8am to 4pm and Friday, 7am to 3pm. We suggest you call ahead to make sure the desired tickets are in stock. Cash, check or credit cards are accepted for all tickets. Please call (215) 343-6100 for more information.



## Calling All Book Lovers

We are still welcoming interested members in the newly established Warwick Book Club, A *Novel Bunch*.

Our meetings are held at 1 p.m. on the second Wednesday of each month at the Warwick Township building. We generally plan on spending 2 hours discussing the book of the month and socializing. The next meeting will



be held on Wednesday, December 12, 2018.

If you are interested in sharing a delightful afternoon with others who love reading and socializing as much as you, please contact Elaine Fitt at [ebfitt@verizon.net](mailto:ebfitt@verizon.net), or 215-913- 4379 for additional details. We would love to have you join us and we look forward to hearing from you.

# Warwick Township Parks and Recreation Department

## Winter Programs

### WINTER PROGRAM REGISTRATION INFORMATION

Registration for WINTER programs will begin on Wednesday, January 2, 2019. The best and easiest way to register is to go to the website for the Parks and Recreation Department ([www.warwickrec.com](http://www.warwickrec.com)). You must create an account before you can register for a program. You can also register in person at the Township Administration building during normal business hours, 8am-4pm, Monday through Thursday and 7am-3pm on Fridays.

All children must be the age or going into the grade specified before the start of the program, **NO EXCEPTIONS!** There is no PRO-RATING for any of our camps or programs. Refunds must be requested at least 2 weeks prior to the start of the camp.

### PRESCHOOL

#### "Let's Get Messy" Playtime

Do your kids love making a mess, but you're not a big fan of cleaning up? This is the perfect class for you and your child. You will work together to make "Messy Masterpieces" and not have to clean up a thing! Come join Miss Sarah for some creative chaos such as all the different paints you can imagine, shaving cream, dirt, sand, water, chalk, play dough and plenty more! You and your child are bound to have a lot of creative fun! Please wear or bring a smock.



**WHEN:** Thursdays, Jan 24 – Feb 28

**TIME:** Session 1: 10am – 10:45am  
Session 2: 11am – 11:45am

**WHERE:** Community Room

**AGES:** 2-5 years old and a parent

**COST:** \$50 resident | \$62 non-resident

**INSTRUCTOR:** Sarah Prebis

• minimum 6, maximum 12

#### Toddler Treats

Teach your preschooler how to help in the kitchen by letting Warwick do everything for you! Join our new class that combines cooking with crafts and activities. Each week, we will choose a food group, make a craft, do an activity and create a yummy treat from that group. We will also learn how to set the table and kitchen etiquette. All supplies are included in the price.



**WHEN:** Fridays, March 8– March 29

**TIME:** 10am – 10:45am

**WHERE:** Community Room

**AGES:** 2 – 5 and a parent

**COST:** \$45 resident | \$54 non-resident

• minimum 6, maximum 12

#### Children Making Music

Children Making Music is a fun, interactive music program for children ages 6 months to 4 years of age. There is lots of singing, moving to music, playing rhythm instruments, and having fun with music. The lesson also includes American Sign Language to help foster a

deeper communication between child and parent. Music + children = an awesome combination.

**WHEN:** Session 1: Tuesdays, Jan 22 – March 12  
Session 2: Thursdays, Jan 24 – March 14

**TIME:** Session 1: 11:15am – 12pm  
Session 2: 6:15pm – 7pm

**WHERE:** Community Room #2

**AGES:** 6 months - 4 years old and a parent

**COST:** \$112 resident | \$135 non-resident  
• minimum 8, maximum 13

#### JR. Soccer Program

It's never too early to develop a child's love for athletics. Our Junior Soccer Starters program is the perfect introduction to sport, promoting fine and gross motor skills development and a strong foundation through physical fitness in your child's most crucial years of development. Children develop the ability to follow directions and face the challenges of early problem solving. Be there with your child to celebrate and discover the joy and excitement of the early successes and milestone achievements.

**WHEN:** Session 1: Fridays, Jan 4 – Feb 8  
Session 2: Fridays, Feb 15 – March 22

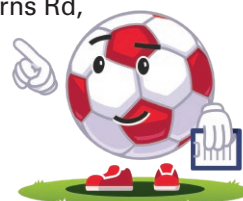
**TIME:** 5:00pm – 5:45pm

**WHERE:** Total Soccer - 1091 Mearns Rd,  
Warminster, PA 18974

**AGE:** 2 - 3 years old

**COST:** \$99 resident  
\$120 non-resident

**INSTRUCTOR:** Total Soccer  
• minimum 6, maximum 24



#### Soccer Stars 1

It's never too early to develop a child's love of soccer and athletics. Our Soccer Starters program is the perfect introduction to soccer basics, promoting physical fitness, creating a positive attitude, developing coordination, and sportsmanship. Instructor ratios are kept small to ensure each child gets the much needed individual attention. We know the importance of first getting kids interested and motivated before they are able to absorb the necessary lessons. Thematic games and fun exercises are designed to inspire and challenge young players, but also allow them to meet with successes that keep them interested in



# Winter Programs

learning more. Learning the fundamentals, and developing a love for the game starts here. Kids that start with us have a real advantage as they mature. We believe it is our duty and privilege to get your kids started off right and develop a passion for the game that will last a lifetime.

**WHEN:** Session 1: Fridays, Jan 4 – Feb 8  
Session 2: Fridays, Feb 15 – March 22

**TIME:** 5pm – 6pm OR 6pm – 7pm

**WHERE:** Total Soccer - 1091 Mearns Rd,  
Warminster, PA 18974

**AGES:** 3 - 4 years old

**COST:** \$99 resident | \$120 non-resident

**INSTRUCTOR:** Total Soccer

• minimum 6, maximum 12

## SCHOOL AGED PROGRAMS

### American Red Cross Babysitting Clinic

Do you want to make money by playing?? Parents are in search of trained child-care providers who are Red Cross Certified! Our Red Cross Babysitters Class give you access to the best in-class instructors who will share the latest information on child care, offer tips, and can answer all of your questions so that you're ready to start your own babysitting business. With lecture and class activities, these courses are engaging, informative and fun! Please bring pen/pencil and your lunch!



**American  
Red Cross**

#### Lessons and Topics covered in the Red Cross Babysitters Training:

- ~ **Basic Care** for infants and children (feeding, diapering, toileting, dressing)
- ~ **Basic First Aid** (conscious choking, bleeding, emergencies, calling 911)
- ~ **Child Behavior** (discipline, role modeling, ages and stages for children)
- ~ **Age Appropriate Activities** (games for each age, capabilities of each age)
- ~ **Emergency Protocols** (FIND decision making, Check/Call/Care for emergencies)
- ~ **Professionalism** (creating resumes, interviewing, following up)
- ~ **Leadership** (role model, communicating with children, being a great example)
- ~ **Growing Your Business** (where to find jobs, how to market to)

**WHEN:** Monday, Jan 21 (CB schools closed)

**TIME:** 9am – 3pm

**WHERE:** Main Meeting Room

**AGES:** 11 – 15 years old

**COST:** \$65 resident | \$78 non-resident

**INSTRUCTOR:** Sarah Prebis  
Certified Red Cross CPR,  
1st Aid, AED and  
Babysitting Instructor

• minimum 6, maximum 15

### Volley Tech Middle School Skills – Beginners

Improve your volleyball IQ skills. Learn Fundamental skills and concepts: passing, digging, setting, serving and attacking. Includes some fun game situations using your volleyball skills and concepts.



**WHEN:** Wednesdays, Feb 6–March 20 – 7 weeks

**TIME:** 6pm – 8pm

**WHERE:** Bridge Valley Elementary School Gym

**AGES:** grades 5 – 8th

**COST:** \$104 resident | \$124 non-resident

**INSTRUCTOR:** Margie Arm and East Coast Power Volleyball

• minimum 8, maximum 14

### Volley-Tech Middle School – Experienced players

Improve your volleyball skills: passing, digging, serving, setting and attacking. Develop and improve all your current skills and be challenged to build upon what you already know. Includes plenty of game situations where players are using their skills and concepts.

**WHEN:** Mondays, Feb 4 – March 18 (no class 2/18.)  
6 weeks

**TIME:** 6pm – 8pm

**WHERE:** Bridge Valley Elementary School Gym

**AGES:** grades 6 – 9th

**COST:** \$92 resident | \$110 non-resident

**INSTRUCTOR:** Margie Arm and East Coast Power Volleyball

• minimum 8, maximum 14

### Create your own Video Games **NEW**

The children will be completely engaged and their imaginations will be inspired. They will design and edit what they want in their 3D video games. The students will choose locations, obstacles, vehicles, characters and more. They will be able to go inside buildings, view from any angle and even move individual body parts adding to the reality and complexity of their video games.



**GAME DEVELOPMENT**

**WHEN:** Tuesdays, Jan 22 – Feb 26

**TIME:** 4:30pm – 5:30pm

**WHERE:** Community Room

**AGES:** grades 6 – 9th – with experience

**COST:** \$110 resident | \$132 non-resident

**INSTRUCTOR:** Computer Explorers Instructor

• minimum 6, maximum 12

# Winter Programs

## SCHOOL AGED PROGRAMS

### Soccer Stars 2

This program is a year round instructional-based league that teaches children advanced skills that are developmentally appropriate, and can be introduced and utilized in Mini Soccer. Through instructional game play, participants will refine body awareness and movement, reinforce social and listening skills, and build on the concept of team play and cooperation. Each one hour session consists of a 10 minute warm up game, one move of the day or skill from the Total Soccer Skill Builders Curriculum, a Mini Soccer Game (3v3/4v4) with instruction, and a 5 minute cool down and review of the days moves and game play. Players will have an opportunity to learn from the game while receiving instruction from one of our highly qualified staff members.

**WHEN:** Session 1: Fridays, Jan 4 – Feb 8  
Session 2: Fridays, Feb 15 – March 22  
**TIME:** 6pm - 7pm  
**WHERE:** Total Soccer - 1091 Mearns Rd,  
Warminster, PA 18974  
**AGES:** 5 - 6 years old  
**COST:** \$99 resident | \$120 non-resident  
**INSTRUCTOR:** Total Soccer  
• minimum 6, maximum 12

## SHOTOKAN KARATE PROGRAM

Ages 4 and up

Are you or your child interested in karate, but you don't want to pay high monthly fees or sign a contract. This is the program for you! Our classes have been developed in such a way as to increase your child's strength, flexibility, agility, balance, endurance, and coordination. Each class will show a marked difference in their self-image and self-confidence levels. They will learn all of this and self defense too! The Warwick Shotokan Karate Club is part of the American Japanese Karate Association – International (AJKA). We teach traditional Japanese Shotokan Karate. The price includes 8 weeks of classes, 2 times a week (unless otherwise noted due to holidays!) **NO CONTRACTS AND NO HIDDEN FEES!**

**DATES:** Wed, Jan 2 – Sat, March 2 (no class 2/18)

\*All classes held in the Community Room at the Warwick Township Building

**COST:** \$160 resident / \$192 non-resident **NEW STUDENTS:** \$80 res / \$96 non & Uniform for the first session

**\*NOTES:** \*There will be Karate Tournaments during these sessions. Classes will be held unless otherwise advised.

\*All payments are due prior to the start of the session through the first week.

A \$20.00 fee may be imposed on any late payment after the first week of the session.

**Beginner Ages 4 – 8:** Mondays 6:30pm – 7:15pm AND Saturday, 9am – 9:45am

**Beginner over 8 years old:** Mondays 6:30pm – 7:15pm AND Saturday 9:45am – 10:30am

**Adult Beginners:** Wednesdays, 7:30pm – 8:30pm AND Saturdays 11:30am – 12:30pm

**Yellow, Orange, Green Belts:** Wednesdays, 6:30pm – 7:30pm  
AND Saturdays 10:30am – 11:30am

**Blue, Purple, Brown & Black Belts:** Wednesdays 7:30pm – 8:30pm AND Saturdays,  
11:30am – 12:30pm



**For more Information on the karate program please go to**  
**[www.warwickshotokan.com](http://www.warwickshotokan.com) or email Sensei Spivack at [warwickshotokan@comcast.net](mailto:warwickshotokan@comcast.net)**

## Special One Day Kids Activities

### Phunny Physics **NEW**

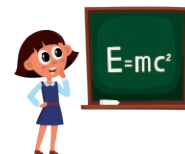
This fun workshop investigates properties of optics, momentum, magnetism, balance, inertia, water pressure, air pressure and energy. Make sonic toys to take home that will entertain and amaze your friends and family.

**WHEN:** Saturday, March 9 **TIME:** 3pm – 4:30pm

**WHERE:** Community Room **AGES:** 4 - 8 years old (4 – 6 years old must be accompanied by an adult.)

**COST:** \$25 resident | \$30 non-resident **INSTRUCTOR:** Mary Crum, Pa certified Science teacher.

• minimum 10, maximum 18





# Winter Programs

## ADULT PROGRAMS



### Zen 10 – 4 week Fat Furnace

The Zen Fitness Challenge is unlike any other fitness class. You'll work on fitness, nutrition and motivation. This special 4 week session is designed to get people fast results, in a really healthy and positive way. The goal is that these 4 weeks propel you to a new, healthy lifestyle.

\* township rate is valid for one session per 12 month period! New clients ONLY!

**WHEN:** Monday –Friday, Jan 7 – Feb 1

**TIMES:** 5am, 6am or 7am

**WHERE:** Action Karate, 2235A York Rd, Jamison

**AGES:** Teen – Adult

**COST:** \$79 resident | \$97 non resident

**INSTRUCTOR:** Zen Fitness



### Warwick Township Zumba

Ditch the workout and join the party! Zumba is a Latin inspired easy-to-follow, calorie burning, dance fitness party. It will energize you, sculpt you, and make you smile. This party is designed for all ages, shapes, sizes and fitness levels. The best part is: NO DANCE EXPERIENCE NECESSARY! Just have fun. The cost includes 8 weeks.

#### MONDAY & FRIDAY DAY ZUMBA

**WHEN:** **MONDAYS:** Mon, Jan 7– March 4  
(no class 2/18)

**FRIDAYS:** Fri, Jan 11 – March 1

**TIME:** 9am – 9:55am

**WHERE:** Community Room

**AGES:** 18 years and older

**COST:** \$64 resident | \$76 non-resident

**INSTRUCTOR:** Kimberly Seidel

\*minimum 5, maximum 15

#### TUESDAY NIGHT ZUMBA

**WHEN:** Tuesdays, Jan 8 – Feb 26

**TIME:** 7pm – 7:55pm

**WHERE:** Community Room

**AGES:** 18 years and older

**COST:** \$64 residents | \$76 non-residents

**INSTRUCTOR:** Kimberly Seidel

\*minimum 5, maximum 15

### Beginner's Oil Painting Class **NEW**

This class is an introduction to the process of oil painting. Learn how to start a painting, organize a palette, mix colors and create texture using a range of techniques and exercises. \* a list of supplies will be emailed to you once registered.

**WHEN:** Tuesdays, Jan 22 – Feb 26 **TIME:** 6:30pm – 8pm

**WHERE:** Community Room #2 **AGES:** Adult – Senior

**COST:** \$270 for resident | \$320 for non -resident

**INSTRUCTOR:** David Stahl

• minimum 4, maximum 6



### Competitive Volleyball

This program is an opportunity for skilled players, levels B+ to A, to play in competitive games. Minimum enrollment must provide for two four person teams. You must pre-register, no registrations will be taken at the school. **SKILLED PLAYERS ONLY, PLEASE!**

**WHEN:** Thursdays, Jan 3 – Feb 28 (no class 2/14)

**TIME:** 6pm - 8pm

**WHERE:** Bridge Valley Elementary School

**AGES:** 18 and up

**COST:** \$32 resident (session is 8 weeks)

\$39 non-resident (session is 8 weeks)

**INSTRUCTOR:** Gary Nice

• minimum 8, maximum 20

### Men's Open Basketball

Grab your buddies and come play in some friendly pick-up games of basketball at Bridge Valley Elementary School. You must pre-register at the Township Building, no registrations will be taken at the school.

**WHEN:** **Session 1:** Mondays, Feb 11 – June 3  
(no class 2/18, 4/22 & 5/27)

**Session 2:** Wednesday, Feb 13-June 5

**TIME:** 8pm – 10pm

**WHERE:** Bridge Valley Elementary School

**AGES:** 18 and up

**COST:** Session 1: (14 weeks) \$56 resident  
\$68 non-resident

Session 2: (17 weeks) \$68 resident  
\$80 non-resident

\*minimum 10, maximum 20



# Winter Programs

## The **CORNERSTONE** Clubs

Take Cornerstone classes without having to join! \*Maximum 5 participants, so register NOW!

**WHEN:** All these run 8 weeks: January 21 – March 16

**WHERE:** Cornerstone Warrington: 865 Easton Rd, Warrington, PA 18976

**COST:** \$69 for resident (unless otherwise noted) \$83 for non resident

### ADULT CLASSES

#### Yoga Gently

A softer, gentler approach to a yoga practice. Appropriate for all levels, including beginners and seniors who can get up and down from the floor without assistance.

**WHEN:** Fridays, starting Jan 25

**TIME:** 10 - 11 am

#### Pilates Mat

Pilates is a total body workout that stretches and strengthens core musculature as well as the back, hips, thighs and gluteal muscles. Small apparatus, such as rings and balls may also be utilized. *For all fitness levels!*

**WHEN:** Sundays starting Jan 26

**TIME:** 8:30am – 9:30am

#### Chair Fit

Chair fit is a low impact cardio and strength class in which participants use a chair for balance and assistance. This class provides just enough support and simplicity to be the perfect exercise prescription for seniors, or those who may be returning to exercise after an injury, or adults looking for a change from a more sedentary lifestyle. *For all fitness levels.*

**WHEN:** Wednesdays, starting Jan 23

**TIME:** 10:30am – 11:30am

#### Ai Chi – in the water

Let the warmth of our healing pool relax and unwind in this meditative Tai Chi class adapted specifically for the water!

**WHEN:** Mondays, starting Jan 21

**TIME:** 12:30pm – 1:15pm

#### Deep Water Aerobics

An aerobic exercise class that allows you to work hard but is still gentle on the joints. Perfect for people with arthritis who want to exercise but have joint pain. Held in the deep end of the pool, participants wear flotation belts for support. No swimming ability necessary. All levels welcome!

**WHEN:** Thursdays starting Jan 24

**TIME:** 7pm – 7:45pm

#### Class Pass **NEW**

Want an option to try several different classes? Want to take 1 particular class but can't commit to the 8 week session? This 6-class pass allows you to take any 6 classes on our group exercise schedule over a 3 month time period. Select from a variety of land and water options for cardio, strength, yoga and more! The pass can be used for any class on Cornerstone's Group Exercise Schedule. *Please note classes in the Healing Pool or Cycling Studio require advanced registration.*



### Introduction to Meditation

**Weds, 7:45pm-8:45pm • Jan. 23 – Feb. 13 (4 weeks) • \$76 resident, \$92 for non-residents, maximum 10 people**

In this four week workshop, find out what meditation really is, what the benefits are, and how the different styles vary. Different styles will be discussed each week with an opportunity to practice at home. You will also learn how to set yourself up for successful meditation practice with tips for stretching, breathing, etc. This class is appropriate for anyone wanting to learn how to improve their quality of life.

## Pack the Police Car

Join the Warwick Township Parks and Recreation Department and the Warwick Township Police Department to "Pack the Police Car". Come meet our officers as the Warwick Township Police look to fill the back seat of a cruiser that will be sitting near the entrance of the Giant Supermarket. Bring items with you to donate or shop for non-perishable items and donate upon exiting the store. The food will be taken to the Food Larder at New Britain Baptist Church to be distributed to people in need throughout Bucks County.

**WHEN:** Saturday, November 17 **TIME:** 10 am - 2 pm

**WHERE:** Giant Supermarket (2395 York Road, Jamison, PA 18929)

**AGES:** All Ages **COST:** FREE

Suggested donations: Coffee and tea, jelly, laundry detergent, toothpaste and toothbrushes, toilet paper, sugar (2 pound box) and flour, ketchup, mayonnaise, mustard, canned fruits, canned juices, juice boxes, pancake mix & syrup, rice, household cleaning supplies, personal care items (deodorant, shampoo, shaving cream, razor, etc), spaghetti sauce, cake mix and icing, canned beans and canned tomatoes, canned meats and canned soups

*This is a wonderful opportunity to give back to those in our own community who are struggling financially during the holiday season!*



# HO HO HOLIDAY PARTY

Gather with your neighbors and join Santa for hot chocolate and cookies. You can warm up by our fire, sit on Santa's lap for a photo, listen to music by the Jamison Elementary School Choir or make your own craft and Holiday card.

Enjoy a performance by the Galena Brass Band. Also, back by popular demand, are the Belgian horses and their carriage. Take a ride through our park.

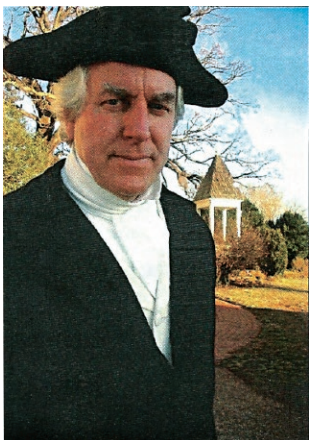
**WHEN:** Saturday, December 1  
**TIME:** 11 am—1 pm  
**WHERE:** Warwick Township Community Park  
1733 Township Greene, Jamison, PA 18929  
**AGES:** All Ages **COST:** FREE

*Event Sponsored by TD Bank*



## MOLAND HOUSE

**DECEMBER 8, 2018 SATURDAY 6:30pm-8pm**



**President James Monroe** will visit the Moland House this December.

He will revisit his experiences during the American Revolution when he joined General Washington's Council of War during August 1777.

This will be President Monroe's first visit since he left the Moland House for the Battle at Brandywine.

James Monroe held more senior public executive offices than any other U.S. president.

*"No president did more to expand the U.S. and foster the security of the nation."* Pres. John Q. Adams.

Come and join us in meeting our fifth president.

Mail your reservation check to: WTHS/Moland House, Marijane Meckling

4688 Bradley Court, Doylestown, PA 18902 Event Location: 1641 Old York Road, Hartsville, Pa  
\$70.00 per person



Name: \_\_\_\_\_

Address: \_\_\_\_\_

Phone: \_\_\_\_\_ Number of Guests: \_\_\_\_\_

[www.molandhouse.org](http://www.molandhouse.org)

[www.facebook.com/moland](https://www.facebook.com/moland)

# Warwick Township Public Works Department

## Is Your Mailbox Ready for Winter?

PennDOT allows property owners to place mailboxes within the limits of the legal right-of-way, out of respect for the U.S. Postal Service's need to deliver, and mail customers' convenience of delivery. But because those boxes are within the right-of-way, damages are the responsibility of the property owner. Be sure your mailbox has strong support. You may also wish to use reflective tape or other material to make it easier to see during storms or during dark hours. Check your box and support often, clearing snow from it and depositing the snow properly and in a manner to allow you and motorists proper sight distances (and never on the roadway). Homeowners who have followed these tips in the past and still experienced damaged mailboxes may wish to consider installing cantilevered mailbox support that will swing a mailbox out of harm's way. An example of a cantilever mailbox can be found on the Public Works page of the township website at [www.warwick-bucks.org](http://www.warwick-bucks.org).

## Basketball Hoops in the Right-of-Way


Public Works is not responsible for basketball hoops or nets placed along the roadway that may be damaged during snow removal operations. Any basketball hoops or nets left in the right of way (roadways and sidewalks) during the months of November through March could be subject to fine.

## Tips for Snowy Weather

- Plowing will begin as the snow depth reaches 3 to 4 inches. Motorists should stay well behind the trucks and give them room to operate.
- Residents are urged to park their cars in their driveways during inclement weather, so snow crews can plow curb-to-curb to provide a wider path for traffic. Those who must park in the street can avoid congestion and potential accidents by not parking opposite driveways.
- Trash cans should be removed from streets and curbs to allow free flow of the snow plow.
- Public Works is not responsible for basketball hoops or nets placed curbside that are damaged during snow removal operations.
- If you live on a designated snow emergency route, you may not park on the street once a snow emergency has been declared.
- Do not throw or blow the snow that you remove from your driveway or sidewalks back into the street. This slows the snow removal process and you could be subject to a fine.
- Wait until all plowing operations have ceased before attempting to clear your driveway. Plowing continues through the snow event until the snow stops and then the roads will receive their final clearing.
- During an emergency/severe weather event- get updates and information on our website [www.warwick-bucks.org](http://www.warwick-bucks.org) or on Facebook.



Perkasie  
215-257-6811  
[www.grimlaw.com](http://www.grimlaw.com)



88 South Main Street  
Doylestown, PA 18901  
215-340-0600

Municipal Engineering - Wastewater Facilities Engineering -  
Water System Facilities Engineering - Stormwater Management

**CKS**  
ENGINEERS, INC.



# We've Made Banking Simple

Anywhere. Anytime.

Mobile Banking App  
& Remote Deposit Capture  
All from your Smartphone or Tablet

Pay Bills • Deposit Checks • Transfer Money  
View Account Balances • Locate Branch Offices and ATMs



**HATBORO  
FEDERAL  
SAVINGS**  
Established 1941

HATBORO :: 215.675.4000  
LENDING :: 215.675.4424  
WARMINSTER :: 215.672.1010  
WARRINGTON :: 215.343.0344  
JAMISON :: 215.918.2722

[hatborofed.com](http://hatborofed.com)

Member FDIC • Equal Housing Lender • App Store • Google Play • Standard rates and fees from your wireless carrier may apply.



*thank you!*

We extend a special thanks to the business and professional members of our community whose support through advertising has made publication of this newsletter possible at no cost to taxpayers. Please support the local businesses that support the Township.



## We Care For Your Eyes.

- Comprehensive Eye Exams
- Pediatric Vision Care
- Treatment of Eye Disease
- Computer Eye Strain Exam
- Contact Lenses: All Types
- Full Selection of Designer and Affordable Eyewear
- Most Insurance Plans Accepted
- Day - Evening - Saturday Hrs

**JAMISON  
EYE CARE CENTER**  
Dennis T. Kwiatkowski, O.D.  
Commonwydds Office Campus  
2370 York Road, Bldg. E-3  
Jamison, PA  
**215-343-5524**  
(Behind the First National Bank  
of Newtown, Jamison Branch)

*Get Ready  
for Winter!*

**PETERS**  
ASSOCIATES  
HEATING & AIR CONDITIONING  
SINCE 1945  
215.331.1900  
215.331.2600  
24 Hour Service

**HEATING, COOLING,  
DUCT CLEANING, SALES, SERVICE**  
Servicing All Brands

facebook

**PETERS**

Air Conditioning & Heating

Associates

Since 1945

PA LIC. NO. PA2134

**PHILADELPHIA:** 215-331-1900

**BUCKS:** 215-862-3700

**ABINGTON:** 215-576-1576

**WARMINSTER:** 215-441-4359

**LOWER BUCKS:** 215-355-2600

**TEXT ME:** 215-768-8615

Email: [Petersassociates1@gmail.com](mailto:Petersassociates1@gmail.com)

[www.PetersAssociatesHVAC.com](http://www.PetersAssociatesHVAC.com)

**PREMIER  
LENNOX DEALER**

*Winter Special*

**\$89**

**GAS & ELECTRIC HEATER CLEANING**

PETERS ASSOCIATES

1 per home. New customers only. Payment due at time of service. Not valid with any other offers.  
Offer expires 1/31/19.





**WARWICK TOWNSHIP**  
1733 Township Greene  
Jamison, PA 18929

PRSR STD  
U.S. POSTAGE  
**PAID**  
Permit #49  
Southampton, PA

LOCAL  
POSTAL CUSTOMER



**Winter 2018**

**hometownpress**

This Community Newsletter is produced for  
the Township of Warwick by **Hometown Press**  
(215) 257-1500 • All rights reserved®



To Place An Ad Call Mr. Kim Kriebel At Hometown Press • 267-371-2833

**Kenrich Mechanical**

Maintenance Contracts  
Service Contracts

Your local hometown service provider!



Family owned & operated since 1988  
Sales & Service

**Heating & Air Conditioning**

[www.kenrich.net](http://www.kenrich.net) Ivyland, Pa 215-675-5040

## CREMATION SHOULD NOT BE OUTSOURCED



Most funeral homes use a third-party contract crematory. Varcoe-Thomas assures every step of care for your loved one is managed within our private facility. If you choose cremation, let our family care for your family.

Jason "Oz" Oszczakiewicz  
Owner/Supervisor  
*Serving Families with Compassion,  
Respect & Professionalism Since 1879*

**215-348-8930**



*State Of The Art Crematory Now On Site*

344 North Main Street  
Doylestown, PA 18901

[www.varcoethomasfuneralhome.com](http://www.varcoethomasfuneralhome.com)