

Within WARWICK



The Heart of Bucks County Pennsylvania



INSIDE

Contact Directory.....	3	Visit the Garden at Moland House	6	Ho Ho Ho Holiday Event.....	11
Board of Supervisors	4	Know Your Local Wildlife	6	Blood Drive	11
Bond Rating	4	Discounted Tickets	7	Warwick Township Fire Company	12
Warwick Tax Office	5	Township Updates Trail and Sidewalk Map	8-9	Melting Snow and Stormwater Runoff.....	14
Early Detection Can Stop a Small Problem from Becoming a Big One.....	5	Wake Me When It's Warmer	10		
		Parks and Recreation	11		

Welcome to Warwick Township
Visit our website at www.warwick-bucks.org

*Providing
Affordable,
High Quality
Dentistry
to the Entire
Community*



Digital X-Rays • Nitrous Oxide
Drill-less Drills

*ALL COSMETIC DENTISTRY INCLUDING:
Bleaching, Bonding, Veneers, Implants,
All Ceramic Crowns and Bridges,
Invisalign and Tooth Contouring.*

Dr. Susan Plotnick, D.M.D.
1672 Fairway Drive, Jamison, PA 18929
215-343-0900

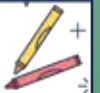
"MY CHILD
LOVES
IT. I LOVE IT."



WELCOME TO THE GODDARD FAMILY



NOW ENROLLING!



JAMISON

215-491-2100 • GoddardSchool.com



THE
GODDARD SCHOOL
FOR EARLY CHILDHOOD DEVELOPMENT

The Goddard Schools are operated by independent franchisees under a license agreement with Goddard Systems, Inc. Programs and ages may vary. Goddard Systems, Inc. program is AdvancED accredited. License #CER-00146793 © Goddard Systems, Inc. 2020



PEST CONTROL SERVICES, INC.

OVER 25 YEARS EXPERIENCE
Phone: 215-317-2841
Hatboro, PA 19040

Bob Darreff

PA Lic 833609

F. WACKENHUT COMPANY

OVER 100 YEARS IN BUSINESS

Plumbing • Heating and Air Conditioning
Residential • Commercial • Industrial



Reg. #PA 011977

2132 York Road • Jamison, PA 18929
PH: 215-343-2222 • Fax: 215-343-2225
kyle.wackenhut@wackenhutcompany.net
www.wackenhutco.com

10% to veterans
Discount – Max. \$100.00

Cannot be combined with other discounts.
Must be presented at time of service.
Expires 12/31/20

**Bucks County's
Finest Luxury
Townhome Rentals**

Private Entrances

DOYLESTOWN • CHALFONT • PERKASIE • SELLERSVILLE

 **HERITAGE**
Property Management

866.721.5687

HeritagePropertyRentals.com



**PETS STAY
FREE!**

WARWICK TOWNSHIP DIRECTORY

1733 Township Greene, Jamison, PA 18929 • 215-343-6100 – 215-343-4407 fax
www.warwick-bucks.org • Comcast Cable Channel 22 • Verizon Cable Channel 46



IMPORTANT PHONE NUMBERS

Police Emergencies

9-1-1

Police Dispatch (non-emergency) 215-328-8502
Warwick Fire Co. (non-emergency) 215-343-9971
Hartsville Fire Co. (non-emergency) 215-672-9242

Fire Emergencies

9-1-1

Water & Sewer Authority 215-343-3584
or 215-491-0610
Tax Collector – Denise Betts 215-491-0611

BOARDS AND COMMISSIONS

Board of Supervisors

3rd Monday 7pm
Judith A. Algeo, Esq., Chair
John W. Cox, Vice Chair
Edward P. Thompson, Jr.

Parks and Recreation Board

Quarterly on 3rd Wednesday 7pm

Financial Advisory Committee

Quarterly and as needed 12pm

Zoning Hearing Board

1st Tuesday, as needed 7pm

Planning Commission

1st Wednesday, as needed 7pm

Tree Committee

Quarterly on 2nd Tuesday, as needed 3pm

Water & Sewer Authority

4th Monday (3rd Monday in May) 7pm

STAFF DIRECTORY

Kyle Seckinger - kseckinger@warwick-township.org
Township Manager

Becki Wilhelm - bwilhelm@warwick-township.org
Assistant Township Manager/Director of Finance and Benefits

Brandy McKeever - bmckeever@warwick-township.org
Director of Planning and Zoning

Ashley Casey - acasey@warwick-township.org
Zoning Officer/Floodplain Administrator

Robert Prato - rprato@warwick-township.org
Fire Inspector/Code Enforcement Officer

Catherine Topley - ctopley@warwick-township.org
Executive Secretary to the Township Manager

Mark Goldberg - warwickpolice@comcast.net
Chief of Police/Emergency Management Coordinator

Mark Rambo - mrambo@warwick-township.org
Director of Public Works

Dan Sharapan - dsharapan@warwick-township.org
Director of Parks, Recreation & Open Space

Erin Long - elong@warwick-township.org
Parks and Recreation Program Coordinator

Maybe it's Time for a Second Opinion? *call me.*

Ameriprise has helped clients navigate challenging economic times for over 125 years. Now as always, I'm here to inform and support you with ongoing market updates, investment recommendations and personalized advice to help keep your plans on track and your goals clear. Together, we'll focus on what matters most to your financial life.

Call me today to discuss your goals.



Ryan D. Murray
APMA®, CRPC®, CLTC®, CFS®, CAS
Private Wealth Advisor
Managing Director

Great Oak Wealth Partners

A private wealth advisory practice of
Ameriprise Financial Services, LLC.

215.757.7600 X 402
215.208.3997 Cell

2300 East Lincoln Highway
Suite 140
Langhorne, PA 19047
Ryan.d.murray@ampf.com
ryandmurray.com



A private wealth advisory practice of Ameriprise Financial Services

Investment products are not federally or FDIC-insured, are not deposits or obligations of, or guaranteed by any financial institution, and involve investment risks including possible loss of principal and fluctuation in value.

Ameriprise Financial Services, LLC. Member FINRA and SIPC.

© 2020 Ameriprise Financial, Inc. All rights reserved.

From the Board of Supervisors...

The Township Supervisors are happy to announce the completion of the Headquarters Trail connection. Back in 2017, the township was awarded \$500,000 through the federal Transportation Alternatives Program (TAP) to fund the construction of a 10' wide multi-use trail to connect the Moland House to Warwick Memorial Park.

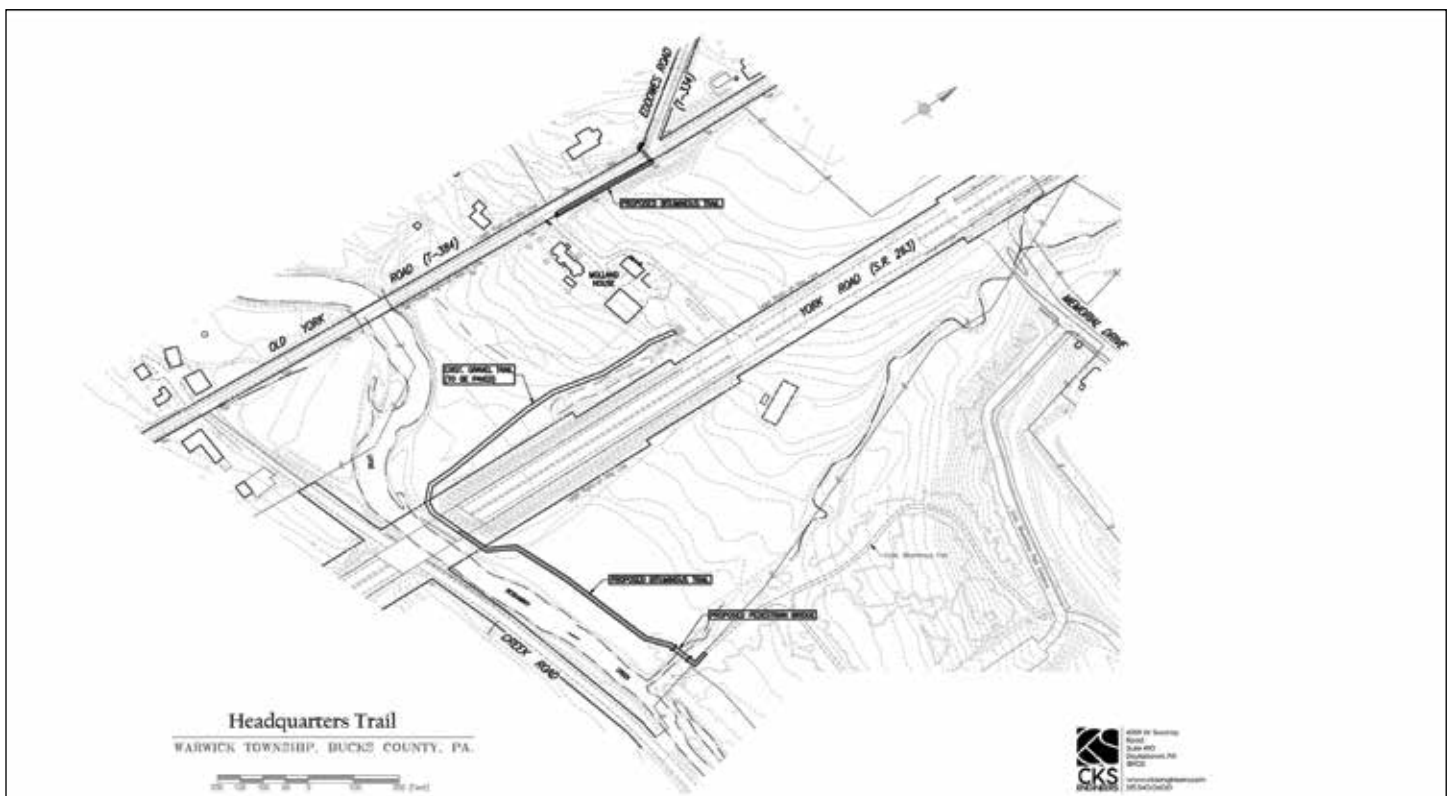
This trail is an important addition to the Board of Supervisors' plan to link Warwick Township neighborhoods via walking and biking connections. The trail starts at the intersection of Eddowes Road and Old York Road, meanders through the Moland House grounds, wanders underneath York Road (Rte. 263), and traverses over a pedestrian bridge which spans a small tributary on its way to the Memorial Park. The trail includes benches, bike racks, and wildlife informative signage to add to your experience. There are parking facilities at both ends of the trail, the Moland House and Memorial Park, so access is easy. Alternatively, both sides of the trail connect to existing trails and sidewalks in Warwick Township. Neighborhoods as north as Guinea Lane can now walk, jog, or ride down Turkeytrot Rd or Meyer Way to Meetinghouse Road and connect to the trail at Eddowes Road. Additionally, an existing trail and bridge on Creek Road connects into the neighborhoods of Heritage Creek, Gabriel Lane, Country Crossings and Stover Mill to the south.

Furthermore, the Warwick Township Board of Supervisors, under the direction of Chair Judith Algeo, Esq., Vice-Chair John Cox and Edward Thompson, Jr., have remained committed to providing this new and exciting trail system to the community without increasing property taxes in 11 years.

For more immediate Township news, we ask that you follow Warwick Township on Facebook, Twitter, or the Township website. For more immediate Township news, we ask that you follow Warwick Township on Facebook, Twitter, Instagram or the Township website.



www.warwick-bucks.org



HAPPY WINTER FROM THE TAX OFFICE

DENISE BETTS TAX COLLECTOR

Real Estate tax bills for 2020 were mailed March 1st and July 1st. If you did not pay your current tax bill, they are in penalty now. Liens for unpaid tax bills for 2020 will be turned over to Bucks County Tax Claim in December. Please update the Tax office of any address changes. For new homeowners or deed changes please remember to apply for the Homestead reduction through Bucks County Board of Assessment by March 1, 2021. The tax office has a generic e-mail reminder list of mailings and due dates. If you would like to be included, please send an email to Denise with the subject e-mail list and you will be added. To contact Denise at the Tax office call 215-491-0611 or e-mail Warwicktaxbetts@aol.com



This office collects only real estate taxes. The earned and LST tax Collector is Keystone Collections. You can contact them at 1-888-328-0565 or their website Keystonecollects.com. File your local return with Keystone by April 15th, 2021.

Early detection can stop a small problem from becoming a big one.

Robert Prato, Fire Inspector/Code Enforcement Officer

Warwick Township Code requires an "interconnected smoke detector" in every bedroom, on every level, in the garage and every room in the basement with a door. When any detector senses smoke, every detector sounds, alerting the occupants of the earliest occurrence of smoke. This provides time to escape, but it also gives a chance to find and eliminate the source of the smoke, which may prevent the smoke from becoming a larger fire.



Evacuate everyone from the residence, call the fire department and then if you can safely do so, search for the source. Remove, unplug, or use a fire extinguisher to control the situation. If not, wait for the fire department to arrive since they are equipped to handle these occurrences.

Wireless technology is being used in smoke detectors now, allowing existing homes to have an interconnected smoke alarm system installed without the expense of installing wires. Homeowners can add detectors as their budget allows until every room is covered.

By installing detectors in every room, everyone in the home will hear the sound the moment one senses smoke.

Warwick residents who sell their home must make this upgrade in order to obtain a Use & Occupancy certificate. This certificate is required for settlement. Why not be as safe as possible while you are living in your home? Install them now and have the peace of mind that you are protected. If you would like assistance figuring out what your home needs to be safe, feel free to contact me at rprato@warwick-township.org. We also offer an in-home safety inspection if you are interested. Be Safe!



104 S. Sixth Street
Perkasie, PA 18944
Phone: 215.257.6811
www.grimlaw.com



For All Your Legal Needs



4259 W. Swamp Road
Suite 410
Doylestown, PA 18902

www.cksenineers.com
215.340.0600

Visit the Garden at the Moland House

The formal Colonial Garden at the Moland House is well underway. A new section of antique brick walkways has recently been added. The Moland House, the crown jewel of Warwick Township, was George Washington's headquarters in August of 1777. It is the place where the Marquis de Lafayette joined the American army.

When available, the garden is being planted with specimens grown in the 18th century. It is meant to be an ornamental garden, perfect for photo ops and social occasions.

As you walk along the pathways, you will see that many of the bricks have been engraved, to permanently honor loved ones, living and lost. If you would like to participate, you can pick up an order form inside the gazebo at the center of the garden. The Moland House is located at 1641 Old York Road, just north of Bristol Road.



The Warwick Township Historical Society, which has restored and maintains the property, invites you to visit often, to see our progress at this ever-changing site. Better yet, you can volunteer to help us create something beautiful. If you are an experienced gardener, or a complete beginner, our expert gardener Steve Forostiak will be delighted to put you to work. Contact him at: frosty171@verizon.net

Although tours of Washington's Headquarters have been suspended until it is safe to meet inside, the 12-acre park, with the garden, nature trailways and picnic grounds makes a delightful family outing. See you there!

Know Your Local Wildlife – Helping Birds Through The Winter



Bird feeding during the winter is very important to species that do not migrate (chickadees, cardinals, finches, blue jays, etc.). Ideally native plants would provide enough food, but they are not as available as they need to be. With that said you will most likely find yourself filling the feeder daily. Placement of feeders should ensure that predators cannot easily attack unsuspecting birds. Be aware different bird species have different feeding requirements, variation in food and feeder types is very beneficial. Suet is especially important in cold weather because it supplies fat that birds desperately need for warmth and energy.

Not only is bird feeding important but so is providing water. During winter months most water sources have turned to ice. Birdbath heaters are an option to ensure the water you provide does not freeze as well.

Penn State Extension offers many publications online which can provide additional information. Including this fun recipe! (Beck, Heather. (2016) Winter Bird Feeding: The Basics. Penn State Extension. https://extension.psu.edu/downloadable/download/sample/sample_id/230/)



Marvel Meal Suet Recipe: 1 cup peanut butter, 1 cup vegetable shortening, 4 cups cornmeal, 1 cup flour, 1 handful of sunflower seeds or bird seed (optional). This mixture can be frozen into blocks and put in a suet feeder or sliced and put on a feeder tray.



DISCOUNTED TICKETS

from the Parks and Recreation Department



The Parks and Recreation Department offers discounted tickets throughout the year. You can purchase discount movie tickets, year round, for \$9.50 per ticket. These tickets are available for use at all Regal Cinemas, United Artists Theatres and EDWARDS Theatres. Tickets are valid for all show times with no restrictions. Movie tickets are perfect for birthday gifts, holiday gift, thank you gifts, employee incentives, etc.

We also offer discount ski tickets. We typically receive our tickets by late December and they are available until the end of March. You can purchase tickets for sites such as Bear Creek, Big Boulder/Jack Frost, Blue Mountain, Camelback, Elk Mountain and Sno Mountain.

All tickets are sold at the Warwick Township building, 1733 Township Greene, Jamison, PA 18929 during normal business hours, Monday – Thursday, 8am to 4pm and Friday, 7am to 3pm. We suggest you call ahead to make sure the desired tickets are in stock. Cash, check or credit cards accepted for all tickets. Please call (215) 343-6100 for more information.

Thank you!

We extend a special thanks to the business and professional members of our community whose support through advertising has made publication of this newsletter possible at no cost to taxpayers. Please support the local businesses that support the Township.

WHY WORK WITH US?

- Be Your Own Boss
- Enjoy Outside Sales Independence
- Proven Products
- Flexible Schedule
- Generous Commissions



**NOW
HIRING!!!**



**Rewarding Work That
Fits Your Life!**

Call for Information 215-257-1500 x106

Email your resume to gregory.cbn@gmail.com

*Dare to
Escape?*



**ESCAPE
the
FUGUE**

*Buy your tickets for the
newest game in town!*

escapethefuge.com

**Reservations Required*

**Use promo code NL520
to save \$5 per person*

215-420-4014

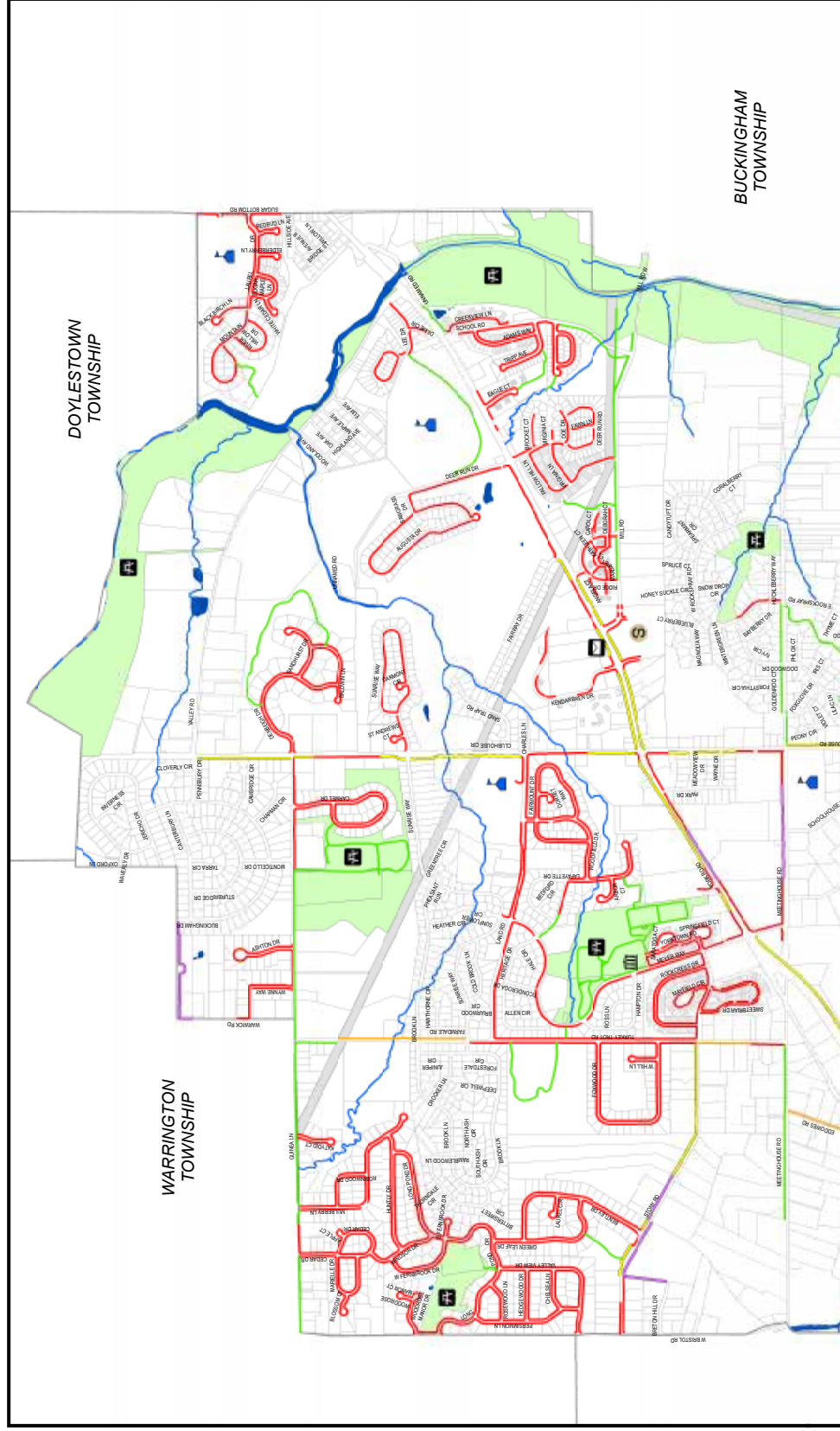
780 Falcon Circle, Suite 116, Warminster

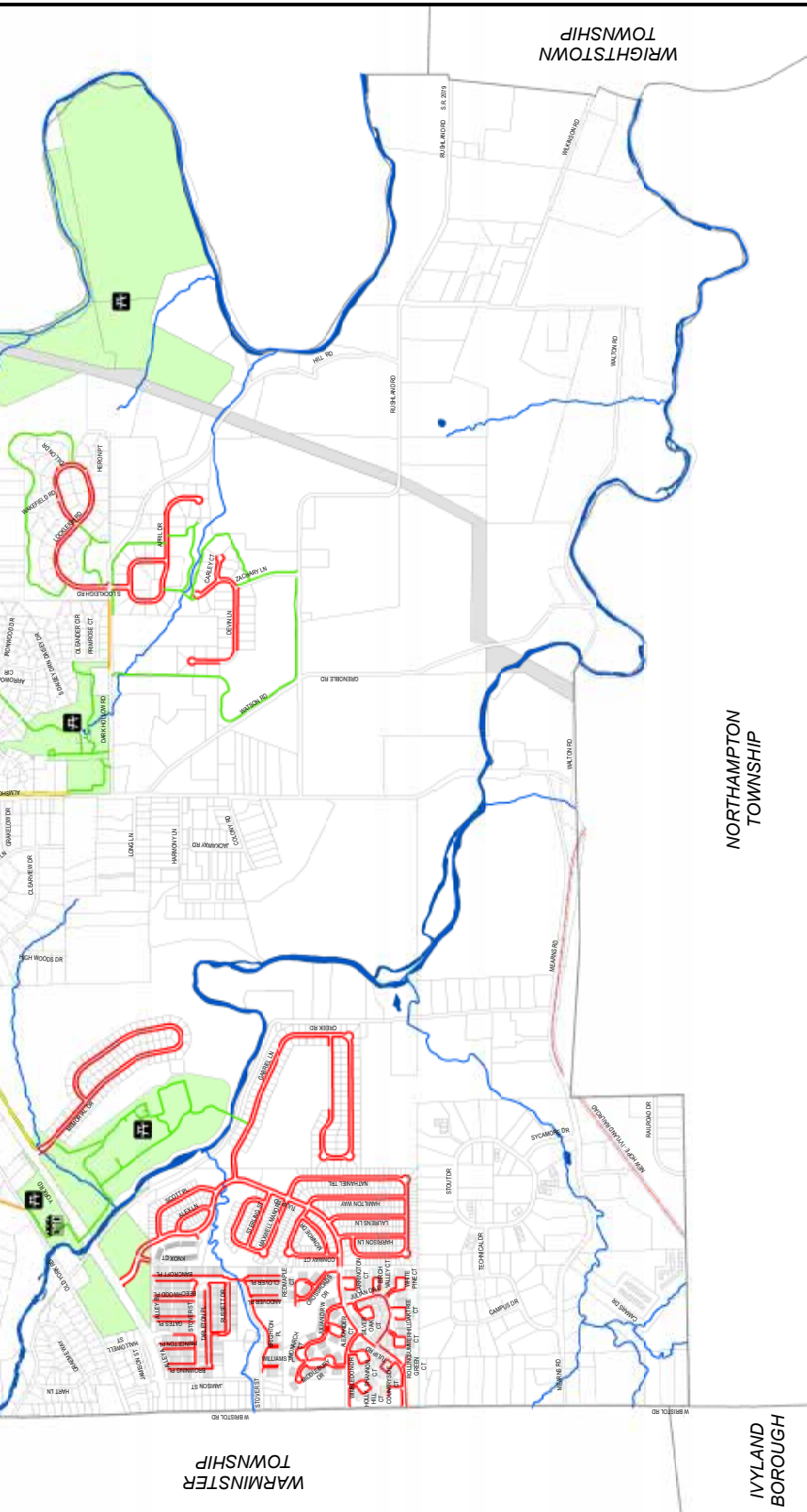
Township Updates Trail and Sidewalk Map

The Township recently updated their trail and sidewalk map. This was a lengthy process that encompassed mapping the entire township and making sure all the sidewalks and trails were included. Also included are any bike lanes that are in the township. The map also shows possible future connections that were discussed by the Parks Board and possible developer contributions.

On the next page, you will see the complete map. You can use the key at the bottom of the map to discern what the type of path is (concrete, bituminous or stone) and its' location.

You can find the map on the township website at www.warwick-bucks.org where you are able to view it or even download a copy. Paper copies can be purchased for \$10 at the township building. Keep in mind, this would be a large document, approximately 36" x 24".





PLACES OF INTEREST

- SCHOOL
- MOLAND HOUSE
- SHOPPING CENTER
- MUNICIPAL BUILDING
- POST OFFICE
- PARK
- TRANSMISSION LINE
- TOWNSHIP/COUNTY PARKS

LEGEND

- CONCRETE SIDEWALK
- BITUMINOUS SIDEWALK / TRAIL
- STONE TRAIL
- BIKE LANE
- STREAMS
- PROPOSED CONNECTION (WTPB)
- PROPOSED CONNECTION (Developer)

SIDEWALKS, PATHS, AND TRAIL MAP

WARWICK TOWNSHIP

Created: 7/19/2019
Revised: 8/13/2019
Revised: 7/28/2020

4259 W. Swamp Road
Suite 410
Doylestown, PA 18902
www.cksengineers.com
215.340.0600

REF. No. 5100-121

Wake Me When it's Warmer

Winter is here and Warwick Township is trying to hide from the cold. Hidden in the jumbled letters below are a bunch of cozy critters. Each one of these critters hibernates during the winter months. That means they sleep right through the cold weather and wake again when it is Spring. See how many you can find and stay toasty warm!

N T I D T S M M M K J T A L F E I P F T D F R V X C Q L P P
T I J C U A T T O C G R N R P N K R F O C D O P X A F C B Y
T V E Q R L Q L O U F B O A Y D F A Y B C P G C J Z U O F B
X I U M Z A L A B H S G K U N C Q G N Y Q C V S L T D X V X
V O O A H M G W T C G E X O Y B M Y T S S E E B T A T Z H P
U T U K B A L D T D D A K G B F S U K A J O K H Y A V Z K B
J Z S X Q N U P R O N V P N X E B K V E F X R P E L B B U Q
C K K C Z D P I D O N H S Z K Q V F N L E M U R E E A M H M
J A U D N E R X C W G Y X X N P H I X U J D E J M S D O P I
O V N P Z R S F G A Y S E A T B F D C H M W J D C B M C W F
S H K N N G U F I K S K C O K E F X L Y K P W B D H I R H X
O B L Z Y D R D J Q Y F Q P E I A I O T K M I D B M N R W A
G R L T W T V F Y D Y C X R H N R S O U M L W H M D S R G L
H O R J S D K G M L A D Y B U G S H L S N A D M C W J O C O
A E D H R I R P O P Z R X U C D L R G P P U E D E T H S P U
I B V W A B A K R B R A P P X W K V Z X W Z Z P X E M R F E
P X T Z E G Y B Z Q W A L Q L K H D D X Z O P S G F F W D O
I K E I B A D K G M M R I Y I S A Z F E O V N D A W P H A L
M O M Z S L I H U K A W F R V V I G U F T S E L E H G W O C
B L A J N A D Z E S H U M M I N G B I R D H S L I A N S T M
X O I O D S P T W C A E X J G E G F Q B M Z N E B O Y R M Y
Y S J T N P R C G S N R B I J E D E L T R U T X O B O X R M
K H Q W Z A Q R D I I W A A S Q K O A K B Z A J I R A T Z G
V V P U E N O U E C C E T T Y K Z M G O D Z Y Y D A V C U T
W T S R I U E L W L J R R H L Z N Y H C G O E T Y C X F Q N
Y C C X N R O P O Q B M U T D K P P A T X D D G C C V N W B
N Y J D N V R K R J Z L U M P Z E R D G W D A V W O J B B N
O L H B E U C E H M K W Y Y X Z A N B G J K S M L O D Z N W
P O R M G E U L L N H J T Q C V S T U T I H H D W N S I M Q
G H Z M G Z M B N I E Z C W H X O Y W A E J X D K J B L J C

- BATS
- BEARS
- BEES
- BOX TURTLE
- CHIPMUNKS

- FROG
- GECKO
- GROUNDHOG
- HEDGEHOG
- HUMMINGBIRD

- LADY BUGS
- LEMUR
- MARMOT
- MOUSE
- PRAIRIE DOG

- RACCOON
- SALAMANDER
- SKUNK
- SNAILS
- SNAKE

- SQUIRREL
- TOAD
- VOLE
- WOODCHUCK

PARKS AND RECREATION INFORMATION

Be sure to check out all of our Winter programs at our website, www.warwickrec.com.

ALL PROGRAMS ARE SUBJECT TO CHANGE DUE TO POSSIBLE COVID-19 RESTRICTIONS AND POSSIBLE BUILDING USE RESTRICTIONS. CHECK OUR WEBSITE FOR THE MOST UP TO DATE LISTINGS.

Registration for WINTER programs begins on Tuesday, December 1. The best and easiest way to register is to go to the website for the Parks and Recreation Department (www.warwickrec.com). You must create an account before you can register for a program. You can also register in person at the Township Administration building during normal business hours, 8am-4pm, Monday through Thursday and 7am-3pm on Fridays. All children must be the age or going into the grade specified before the start of the program, NO EXCEPTIONS! There is no PRO-RATING for any of our camps or programs. Refunds must be requested at least 2 weeks prior to the start of the program.

HO HO HO HOLIDAY EVENT 2020

We are so excited to bring Warwick Township the popular HoHoHo Event again this year. Come visit SANTA is his brand new, completely socially distant, Santa House. Friends of the Big Guy will get pictures taken with Santa, in a completely new and safe way. The first 200 kids to visit Santa at his new house will receive a free Park & Rec drawstring bag with a craft kit inside (while supplies last). Do not miss this chance to see performances by The Joy of Movement Dancers. Not to mention an appearance by our favorite lion ROAR WICK! It's the Holiday Season and Warwick Township will not miss out this year.

Saturday, December 5, 2020 • 11am – 1pm
Warwick Township Community Park
1733 Township Greene, Jamison, PA 18929

**The need is constant.
The gratification is instant.
Give blood.**



Warwick Township

Main Meeting Room – 1733 Township Greene, Jamison

January 19, 2021
2:00 pm – 7:00 pm

Contact information: Erin Long, 215-343-6100 x204
elong@warwick-township.org



© 2010 The American National Red Cross. All America #1000 Dec. 2010

redcrossblood.org | 1-800-RED-CROSS



How to Contact Warwick Township Fire Company:

Do you have a question for Warwick Township Fire Company? Visit www.warwickfd.com and use the **CONTACT US** link to send your message to the fire company.

Warwick Township Fire Company No. 1
2390 York Road, Jamison, PA 18929

215-343-9971 Non-emergency
EMERGENCY – DIAL 9-1-1

Follow Warwick Township Fire Company on social media:

Instagram.com/warwickfd66

Facebook.com/WarwickFD

Twitter.com/WarwickFireCo

WARWICK TOWNSHIP FIRE COMPANY NO. 1 VOLUNTEER APPLICATIONS NOW BEING ACCEPTED

New members are needed and always welcomed at Warwick Township Fire Company No. 1. We welcome you to consider joining our team as a Volunteer Firefighter, Junior Volunteer Firefighter, Fire Police Officer, or Associate Member. Now is the time to answer the call for help, and any amount of time you can give is worthwhile and makes a positive difference in this great community.

Did you know that the Volunteer and Junior Firefighters meet weekly for training drills? These drills allow the firefighters to apply their knowledge on tasks while learning new techniques or refining their rescue techniques to be ready for operational preparedness. They participate and attend state certified classes to continue their development of basic and advanced firefighting skills, rescue techniques, CPR, and first aid. Our Company Officers train and mentor members of the junior firefighter program to build their skills while they advance towards firefighter certification.

The Associate Team Members work together on

supplemental fundraisers, community events, fire prevention education, and health and wellness programs. This team also provides the fire company with marketing, social media, informational technology and recruitment assistance.

A Fire Police Officer is a volunteer fire company member supporting firefighting efforts at emergency incidents. They receive specialized training, and upon training completion, the Fire Police Officer takes an oath of office and is sworn in by a municipal official.

Please visit www.warwickfd.com to request volunteer information and a membership application. A fire company member will contact you, answer your questions, and discuss the volunteer requirements. All prospective members must pass a background check. Firefighter and Fire Police Officer positions require a physical evaluation.

We greatly appreciate and thank you for your continued support of Warwick Township Fire Company No. 1.



ANNUAL FUND DRIVE

The Officers and Members of Warwick Township Fire Company No. 1, sincerely extend their gratitude and thank everyone for the continued support of the Annual Fund Drive fundraiser. We are most grateful for all the past donations - and your consideration of future donations - to your community's all-volunteer fire company.

The Annual Fund Drive is the most important fundraiser we conduct each year. The generous donations we receive from you help to supplement the yearly operating budget, and greatly help offset the expenses that are part of running a volunteer fire company.

We hope to rely on your continued support again this year. There are two ways you can make a donation to Warwick

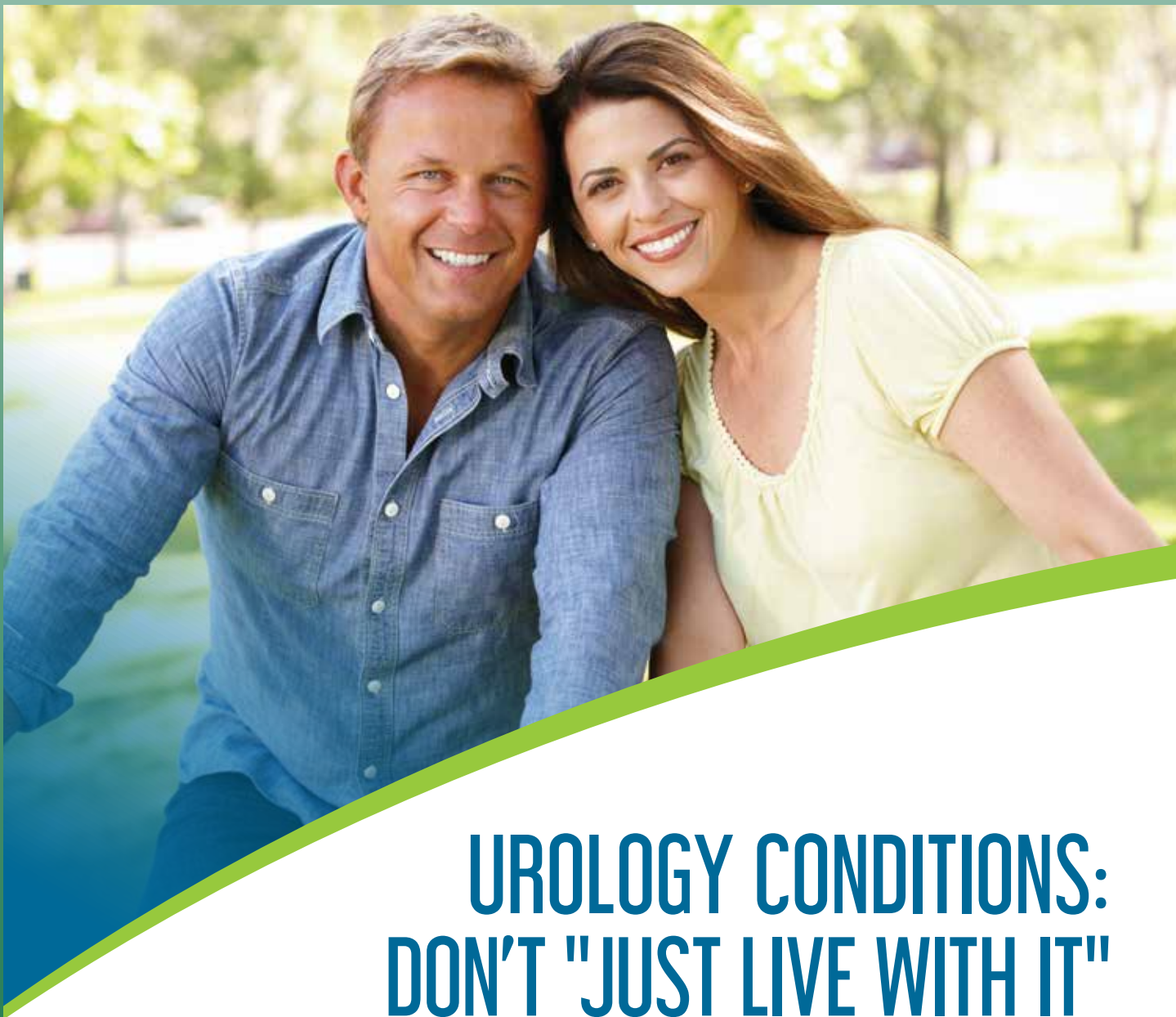
Township Fire Company:

For your convenience, you can make and send an online donation by using our secure website www.warwickfd.com and click on the **DONATE** button.

Make checks payable to: *Warwick Twp. Fire Company No. 1*

Send the donation by mail to: The First National Bank & Trust Co. of Newtown. c/o Warwick Twp. Fire Company, 2370 York Road, PO Box 99, Jamison, PA 18929

Thank you for supporting the volunteers of Warwick Township Fire Company. It is our honor to serve and protect the residents and businesses in Warwick Township.



UROLOGY CONDITIONS: DON'T "JUST LIVE WITH IT"

Don't suffer in silence. We understand that bladder issues and pelvic pain in men and women, as well as sexual dysfunction and infertility in men, are sensitive matters. Our compassionate, board-certified urologists use the latest technology and innovative procedures to diagnose and treat a wide range of urological issues. Take your life, and your health, back into control. Schedule an appointment today with the caring experts at Doylestown Health Urology.

Call Today to Make an Appointment: 215.230.0600

DoylestownHealth.org/Urology

 **Doylestown Health**

MELTING SNOW AND STORMWATER RUNOFF

In winter, melting snow can cause flooding and stormwater runoff issues. If the ground is frozen at the surface, melting snow can't infiltrate into the soil. The runoff from melting snow can pick up all kinds of debris, pollutants, and litter that will find their way into nearby streams. Below are some tips to help the Township improve the water quality in our streams, lakes and rivers:

- **Shovel early.** Less salt will be needed.
- **More salt does not mean more melting.**
- **15 is too cold for salt.** Most salts stop working at this temperature.
- **Sweep up excess salt rather than letting it be washed away.**
- **Understand what's in it.** Instead of sodium chloride or calcium chloride use products containing an acetate, potassium chloride, or magnesium chloride which are better for the environment.
- **Pile shoveled snow on grass or gardens areas.** This will allow some of the water to infiltrate into the ground as it melts.
- **Make sure your nearest storm drains are clear.**
- **Take a "Snow Day".** Give time for the road crews to clear the roads.

For any questions or concerns regarding stormwater or if you observe pollutants entering the storm sewer or stream, please call Warwick Township at 215-343-6100.



CREMATION SHOULD NOT BE OUTSOURCED



Most funeral homes use a third-party contract crematory. Varcoe-Thomas assures every step of care for your loved one is managed within our private facility. If you choose cremation, let our family care for your family.

Jason "Oz" Oszczakiewicz
Owner/Supervisor

*Serving Families with Compassion,
Respect & Professionalism Since 1879*

215-348-8930



State Of The Art Crematory Now On Site

344 North Main Street
Doylestown, PA 18901

www.varcoethomasfuneralhome.com



HATBORO FEDERAL SAVINGS

Established 1941

hatborofed.com

Member FDIC • Equal Housing Lender • STAR •

Buy Your First Home with Confidence
GREAT RATES • GREAT SERVICE

HATBORO :: 215.675.4000 LENDING :: 215.675.4424
WARMINSTER :: 215.672.1010 JAMISON :: 215.918.2722
WARRINGTON :: 215.343.0344

HERB ELSNER'S AUTO REPAIR & TOWING

215-348-9888

30 Rogers Rd
Furlong, PA 18925
215-397-7935

24 Hr TOWING SERVICE



Chilly Weather, Hot Listing!

List your house for glowing results.

From Your Neighbor and Local Real Estate RE/MAX Agent



Maria R. Imle ABR

Cell: 267-278-2080 • E-Fax: 215-689-3627
2701 York Road, Jamison, PA 18929



*Hometown Press, the publisher of
your Hometown Newsletter*

**We would like to send out a
Heartfelt, Safe and Healthy
message to all the residents,
businesses, and Township staff
during this pivotal time in history.**

*"And the World Came Together as
the People Stayed Apart"*



We Care For Your Eyes.

- Comprehensive Eye Exams
- Pediatric Vision Care
- Treatment of Eye Disease
- Computer Eye Strain Exam
- Contact Lenses: All Types
- Full Selection of Designer and Affordable Eyewear
- Most Insurance Plans Accepted
- Day - Evening - Saturday Hrs

JAMISON EYE CARE CENTER

Dennis T. Kwiatkowski, O.D.
Commonwydds Office Campus
2370 York Road, Bldg. E-3
Jamison, PA

215-343-5524

(Behind the First National Bank
of Newtown, Jamison Branch)





WARWICK TOWNSHIP
1733 Township Greene
Jamison, PA 18929

PRSRT STD
 U.S. POSTAGE
PAID
 Permit #49
 Southampton, PA

LOCAL
 POSTAL CUSTOMER



Winter 2020




Your Home
 Pure Air Technology helps create a cleaner, healthier and more comfortable living environment at home, at work, and beyond.

Air Scrubber by Aerus uses ActivePure Technology originally developed by NASA and is nearly 100% effective in eliminating airborne and surface bacteria, viruses, mold, fungus, and volatile organic compounds.





Kenrich Mechanical
 Heating & Cooling 215-675-5040



This Community Newsletter is produced for
 the Township of Warwick by Hometown Press
 (215) 257-1500 • All rights reserved®

To Place An Ad Call Mr. Kim Kriebel At Hometown Press • 267-371-2833



*Thank you to our advertisers for
 supporting Warwick Township during this trying time.*

Buissy B Pest Control Services, Inc.	Goddard School - Jamison	Jamison Eye Care Center
CKS Engineers, Inc.	Great Oak Wealth Partners	Kenrich Mechanical Inc.
Doylestown Hospital	Grim, Biehn & Thatcher	Re/Max Centre Realtors - Maria R. Imle ABR
Dr. Susan Plotnick, D.M.D.	Hatboro Federal Savings	Varcoe-Thomas Funeral Home of Doylestown, Inc.
Escape the Fuge, LLC	Herb Elsner's Auto Repair & Towing	
F. Wackenhut Company	Heritage Property Management	