

ROAD WIDENING

**LEGEND**

- X 355.75 EXISTING SPOT GRADE ELEVATION
- Conc. Sidewalk EXISTING SIDEWALK
- EXISTING CONCRETE CURB
- LEGAL RIGHT-OF-WAY LINE
- PROPERTY LINE
- EASEMENT
- DTL DOUBLE YELLOW LINE
- STW SINGLE WHITE LINE
- STORM SEWER AND INLET
- WV WATER VALVE
- MB MANHOLE
- OH MANHOLE
- SP SIGN
- LP LIGHT POLE
- PH FIRE HYDRANT
- UP UTILITY POLE
- T.B.R. TO BE RELOCATED

**GENERAL NOTES:**

1. IN ACCORDANCE WITH ACT 50, THE CONTRACTOR SHALL CONTACT ALL UTILITY COMPANIES INDIVIDUALLY AND SHALL NOTIFY THE PENNSYLVANIA UTILITIES "ONE CALL" SERVICE AT LEAST 72 HOURS PRIOR TO COMMENCEMENT OF ANY EXCAVATION.
2. EXISTING TOPOGRAPHY SHOWN HEREON IS BASED ON FIELD SURVEYS PERFORMED BY OES ENGINEERS, INC. DURING THE MONTHS OF APRIL AND JUNE 2021. DATUM: MGS-83.
3. RIGHT-OF-WAY LINE AND PROPERTY LINE INFORMATION SHOWN HEREON HAS BEEN ESTABLISHED SHAPFULLY USING RECORDS AND PLANS OF RECORD.
4. LOCATION OF EXISTING UTILITIES WERE OBTAINED FROM VARIOUS PLANS AND LIMITED FIELD EXPLORATION. THEY ARE APPROXIMATE. CONTRACTOR SHALL BE RESPONSIBLE FOR LOCATING AND MARKING OUT OF ALL EXISTING UTILITIES IN THE FIELD PRIOR TO COMMENCING WORK.
5. ALL CONSTRUCTION SHALL BE IN ACCORDANCE WITH PENNDOT SPECIFICATIONS PUBLICATION 406, LATEST EDITION AND WARWICK TOWNSHIP SPECIFICATIONS.
6. CONTRACTOR SHALL BE RESPONSIBLE FOR PROTECTION AND MAINTENANCE OF TRAFFIC AT ALL TIMES IN ACCORDANCE WITH THE REQUIREMENTS SET FORTH BY THE APPROPRIATE GOVERNMENTAL AGENCY HAVING JURISDICTION. ACCESS TO ALL DRIVEWAYS SHALL BE PROVIDED AT ALL TIMES.

**ACT 50**

CONTACTED: 6/17/2021 SERIAL NO.: 2021180791  
 THE CONTRACTOR SHALL CONTACT ALL UTILITIES OR PRIVATE CONCERNS IN COMPLIANCE WITH THE REQUIREMENTS OF P.L. 052, No. 237, DECEMBER 10, 1974 AS AMENDED ON APRIL 26, 2018 BY ACT No. 50, 72 HOURS PRIOR TO ANY EXCAVATION BY CALLING 800-243-1779 AND/OR TELEPHONE NUMBERS LISTED BELOW. UTILITIES OR PRIVATE CONCERNS TO BE CONTACTED SHALL INCLUDE, BUT NOT BE LIMITED TO, THE FOLLOWING:



**NOTE:**  
 IT IS THE CONTRACTOR'S RESPONSIBILITY TO VERIFY ALL EXACT LOCATIONS AND ELEVATIONS OF ALL UNDERGROUND FACILITIES AND STRUCTURES BEFORE THE START OF CONSTRUCTION ON THIS PROJECT. THIS NOTICE APPLIES TO INFORMATION SHOWN ON THIS PLAN AND ANY ASSOCIATED PLANS FOR THIS PROJECT INCLUDING PLANS OF SAME PREPARED BY OTHERS, E.G. UTILITY COMPANY PLANS.

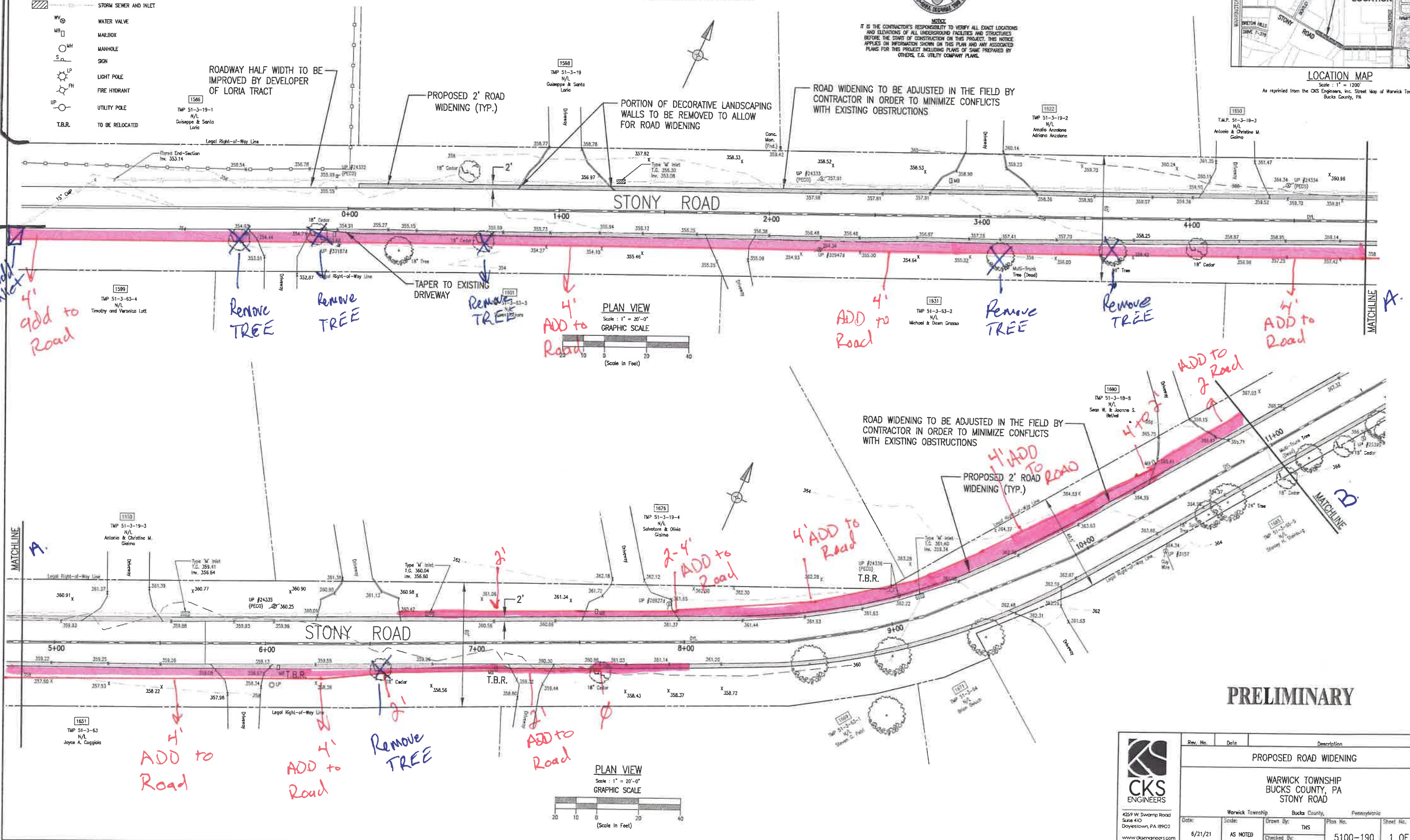
**LIST OF PUBLIC UTILITIES**

- Comcast Cablevision  
35 Industrial Drive  
Wyndand, PA 19374  
Contact: Kuba Brown
- Warwick Township  
2043 Dulme Lane  
Jermans, PA 18929  
Contact: Mark Rambo  
email: mrambo@warwick-township.org
- Warwick Township Water and Sewer Authority  
1733 Township Greene  
P.O. Box 315  
Jermans, PA 18929  
Contact: Michael Sullivan  
email: msullivan@warwick.org
- Verizon-Pennsylvania, LLC  
1050 Virginia Drive  
Fort Washington, Pa. 19074  
Contact: Dorine Leppard Johnson
- PECO Energy Co. C/D USOC  
450 S. Henderson Road Suite B  
King of Prussia, PA 19406  
Contact: Jessica Simpana  
email: jsimpana@peco.com
- North Wales Water Authority  
200 W. Walnut Street  
North Wales, PA 19454  
Contact: Joseph Murphy  
email: jmurphy@nwwater.com



**LOCATION MAP**

Scale: 1" = 1200'  
 As reprinted from the OES Engineers, Inc. Street Map of Warwick Township, Bucks County, PA



**GENERAL NOTES:**

1. IN ACCORDANCE WITH ACT 50, THE CONTRACTOR SHALL CONTACT ALL UTILITY COMPANIES INDIVIDUALLY AND SHALL NOTIFY THE PENNSYLVANIA UTILITIES "ONE CALL" SERVICE AT LEAST 72 HOURS PRIOR TO COMMENCEMENT OF ANY EXCAVATION.
2. EXISTING TOPOGRAPHY SHOWN HEREON IS BASED ON FIELD SURVEYS PERFORMED BY CKS ENGINEERS, INC. DURING THE MONTHS OF APRIL AND JUNE 2021. DATUM NAD-83.
3. RIGHT-OF-WAY LINE AND PROPERTY LINE INFORMATION SHOWN HEREON HAS BEEN ESTABLISHED GRAPHICALLY USING DEEDS AND PLANS OF RECORD.
4. LOCATION OF EXISTING UTILITIES WERE OBTAINED FROM VARIOUS PLANS AND LIMITED FIELD EXPLORATION. THEY ARE APPROXIMATE. CONTRACTOR SHALL BE RESPONSIBLE FOR LOCATING AND MARK OUT OF ALL EXISTING UTILITIES IN THE FIELD PRIOR TO COMMENCING WORK.
5. ALL CONSTRUCTION SHALL BE IN ACCORDANCE WITH PENNDOT SPECIFICATIONS PUBLICATION 408, LATEST EDITION AND WARWICK TOWNSHIP SPECIFICATIONS.
6. CONTRACTOR SHALL BE RESPONSIBLE FOR PROTECTION AND MAINTENANCE OF TRAFFIC AT ALL TIMES IN ACCORDANCE WITH THE REQUIREMENTS SET FORTH BY THE APPROPRIATE GOVERNMENTAL AGENCY HAVING JURISDICTION. ACCESS TO ALL DRIVEWAYS SHALL BE PROVIDED AT ALL TIMES.

**ACT 50**

CONTACTED: 6/17/2021 SERIAL NO.: 20211680791  
 THE CONTRACTOR SHALL CONTACT ALL UTILITIES OR PRIVATE CONCERNS IN COMPLIANCE WITH THE REQUIREMENTS OF P.A. 052, NO. 037, DECEMBER 10, 1974 AS AMENDED ON APRIL 28, 2019 BY ACT NO. 50, 72 HOURS PRIOR TO ANY EXCAVATION BY CALLING 800-342-1779 AND/OR TELEPHONE NUMBERS LISTED BELOW. UTILITIES OR PRIVATE CONCERNS TO BE CONTACTED SHALL INCLUDE, BUT NOT BE LIMITED TO, THE FOLLOWING:



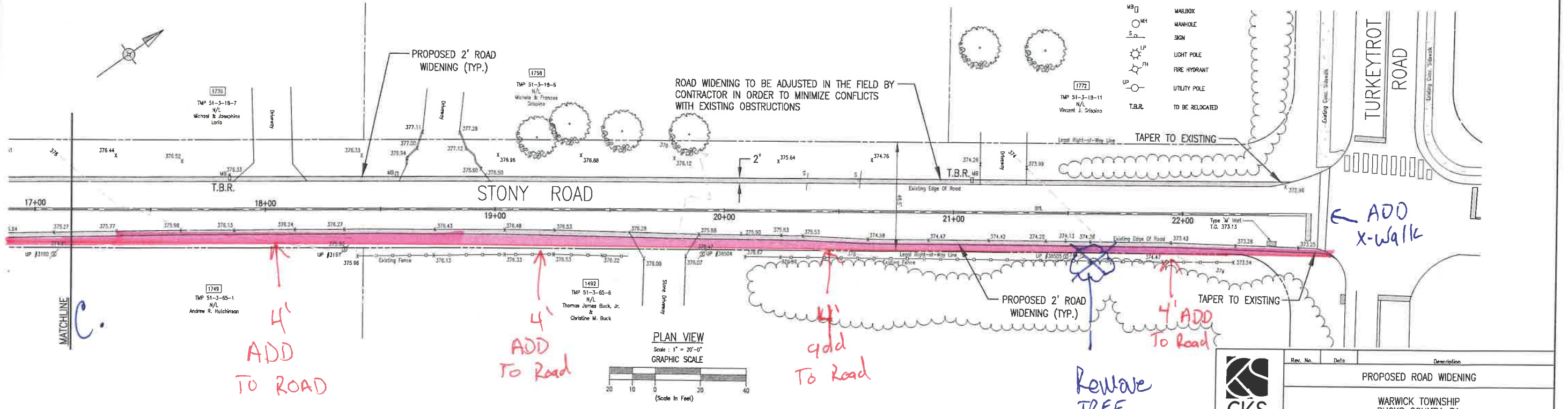
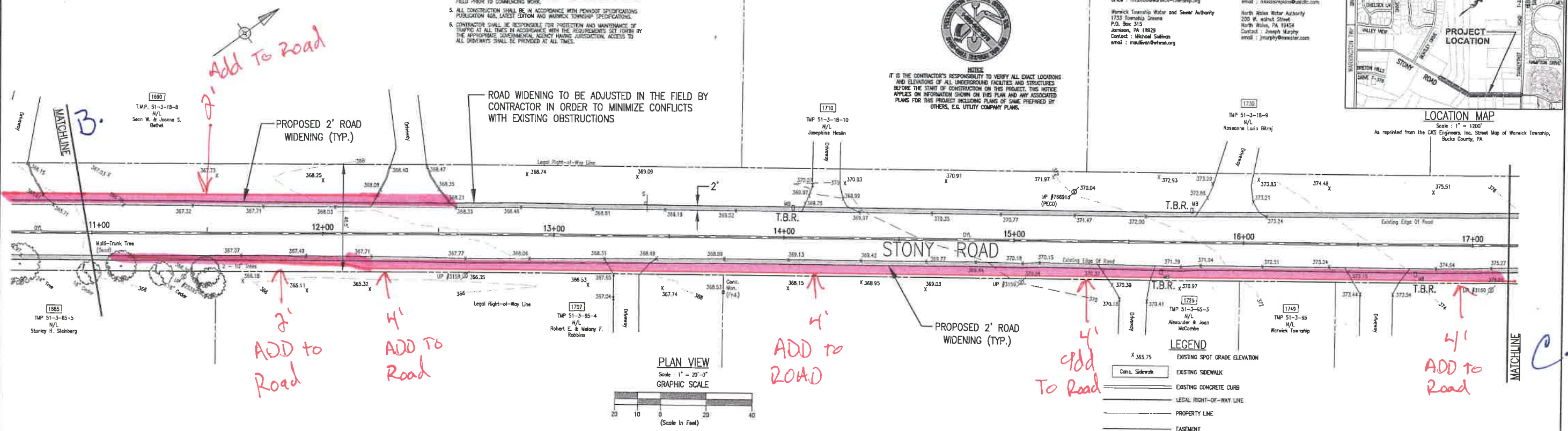
IT IS THE CONTRACTOR'S RESPONSIBILITY TO VERIFY ALL EXACT LOCATIONS AND ELEVATIONS OF ALL UNDERGROUND FACILITIES AND STRUCTURES BEFORE THE START OF CONSTRUCTION ON THIS PROJECT. THIS NOTICE APPLIES ON INFORMATION SHOWN ON THIS PLAN AND ANY ASSOCIATED PLANS FOR THIS PROJECT INCLUDING PLANS OF SAME PREPARED BY OTHERS, E.G. UTILITY COMPANY PLANS.

**LIST OF PUBLIC UTILITIES**

- Comcast Cablevision  
55 Industrial Drive  
Lansdale, PA 19374  
Contact: Kaitie Brown
- Warwick Township  
2245 Guinea Lane  
Jermontown, PA 19029  
Contact: Mark Tamba  
email: mrambo@warwick-township.org
- Warwick Township Water and Sewer Authority  
1733 Township Greens  
P.O. Box 315  
Jermontown, PA 19029  
Contact: Michael Sullivan  
email: msullivan@wswa.org
- Verizon-Pennsylvania, LLC  
1050 Virginia Drive  
Fort Washington, PA 19034  
Contact: Dorine Lappert Johnson
- PECO Energy Co. c/o USIC  
450 E. Henderson Road Suite B  
King of Prussia, PA 19406  
Contact: Mike Zimyska  
email: mizimyska@peco.com
- North Wales Water Authority  
200 W. Walnut Street  
North Wales, PA 19454  
Contact: Joseph Murphy  
email: jmurphy@nwwater.com



**LOCATION MAP**  
 Scale: 1" = 1200'  
 As reprinted from the CKS Engineers, Inc. Street Map of Warwick Township, Bucks County, PA



- LEGEND**
- X 365.75 EXISTING SPOT GRADE ELEVATION
  - CONC. SIDEWALK
  - EXISTING SIDEWALK
  - EXISTING CONCRETE CURB
  - LEGAL RIGHT-OF-WAY LINE
  - PROPERTY LINE
  - EASEMENT
  - DTL
  - DOUBLE YELLOW LINE
  - SW
  - SINGLE WHITE LINE
  - STORM SEWER AND INLET
  - WV
  - WB
  - MH
  - SP
  - LP
  - UP
  - T.B.R.



Rev. No.	Date	Description
		PROPOSED ROAD WIDENING
		WARWICK TOWNSHIP BUCKS COUNTY, PA STONY ROAD
		Warwick Township: Bucks County, Pennsylvania
Date:	Drawn By:	Plan No.:
6/21/21	AS NOTED	TNS
	Checked By:	JWE
		5100-190
		2 OF 2

**PRELIMINARY**

4259 W Swamp Road  
 Suite 400  
 Doylestown PA 19022  
 www.cksen.com  
 215 340 6400